

TomTom Navigator 5 POI Installation Guide

Author : POIHandler.com
Version : 1.0
Date : 10 July 2005

This manual was produced by POIHandler.com. Information in this document is subject to change without notice. Companies, names, and data used in examples herein are fictitious unless otherwise noted. No part of this document may be reproduced or transmitted in any form or by any means, electronic or mechanical, for any purpose, without the express written permission of POIHandler.com.

Contents

Introduction.....	3
Versions	3
Requirements	3
Download	4
Installation	5
POI Warning	9
Navigate to POI.....	13
Feedback.....	15



Introduction

This manual explains how to install external Point of Interest from POIHandler.com to TomTom Navigator 5.

Versions

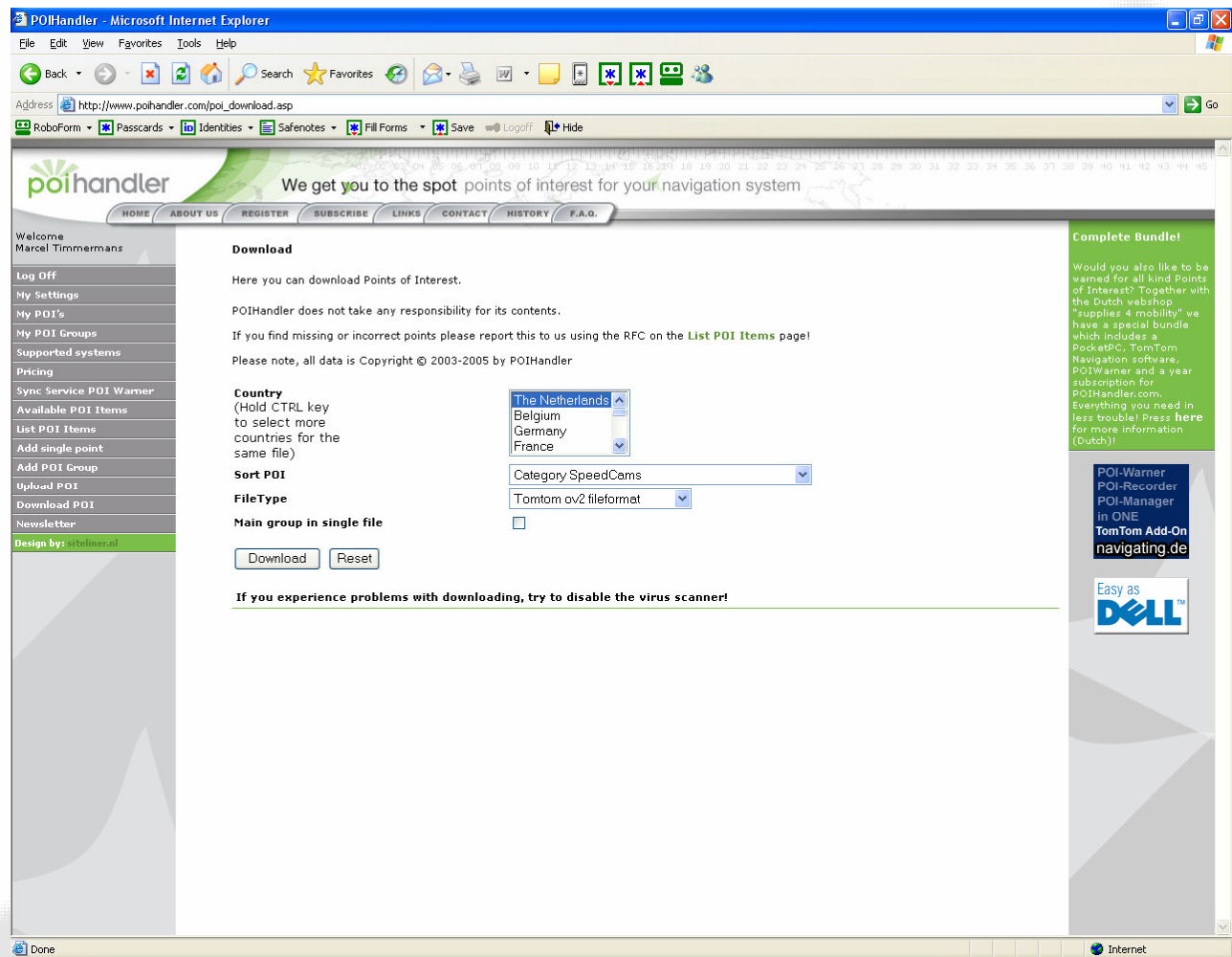
Version	Date	Author
1.0	10-07-2005	Marcel Timmermans, POIHandler.com

Requirements

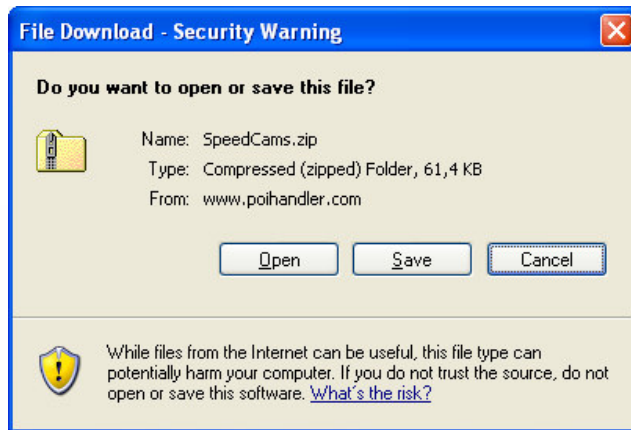
You need a computer that is connected to the internet. In addition to this you need to have you TomTom Navigator 5 connected to your computer.

Download

The first step is go to poihandler.com and login to the website. Select from the left menu "Download POI". This will give you the following screen:



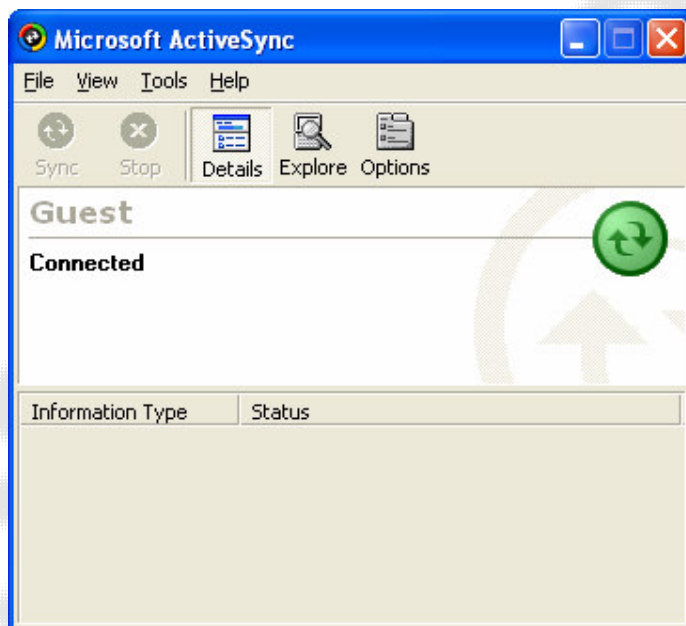
Select the country and for the sort POI for example Speedcams. The filetype must be TomTom ov2 format. Press "Download" to Download the zip file. Save the file on your computer by selecting "save" when prompted.



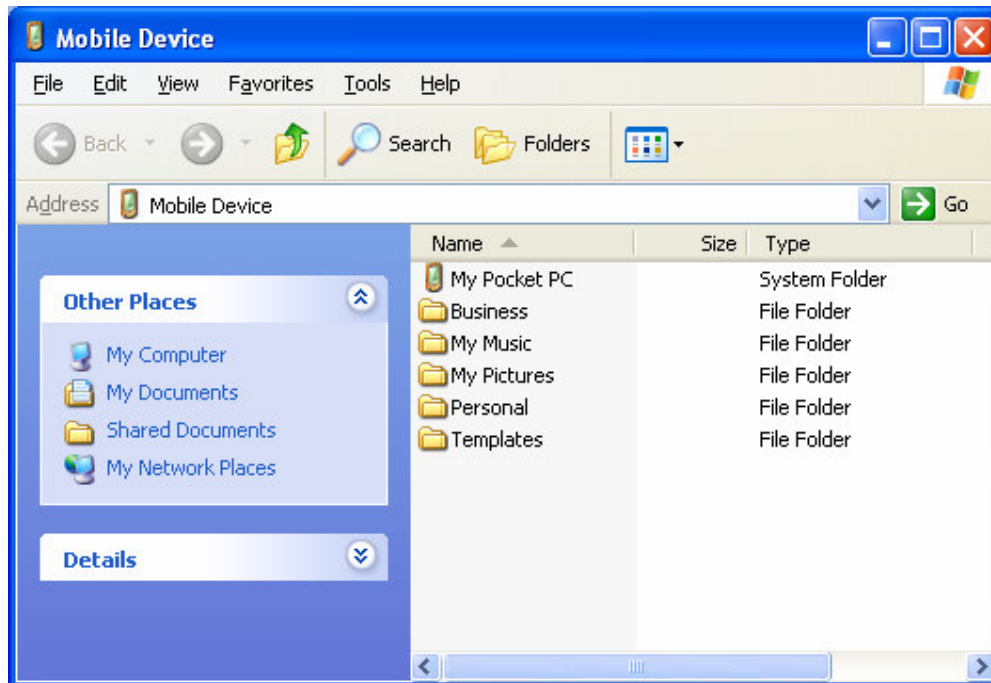
Save the file in a place where you can easily find it again. Unzip the contents.

Installation

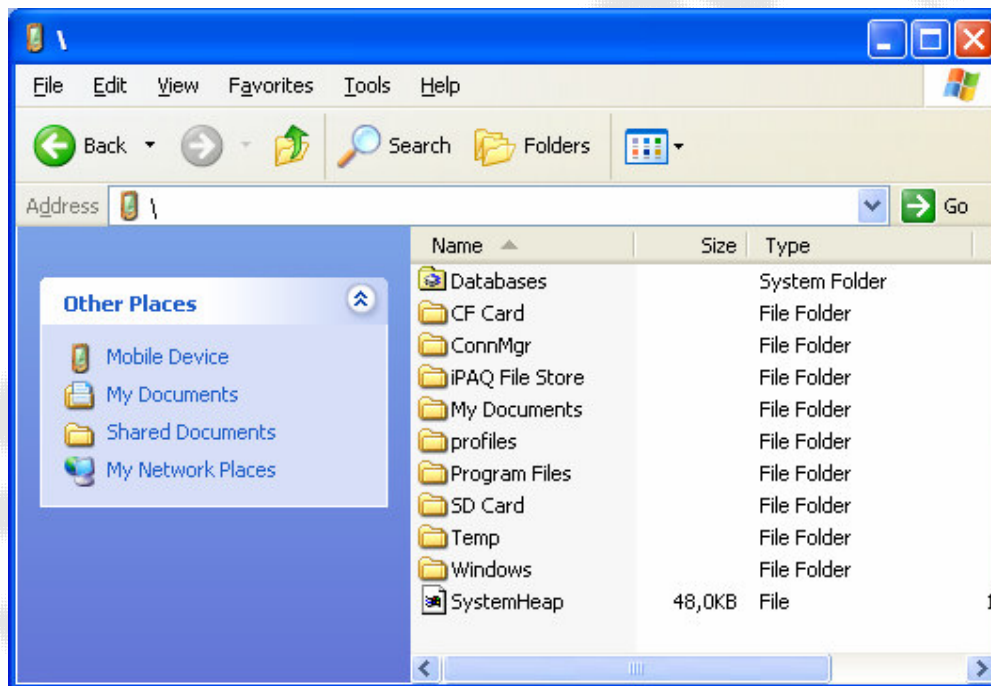
Make sure you PDA is in the cradle installed with TomTom Navigator 5 and you active sync is connected.



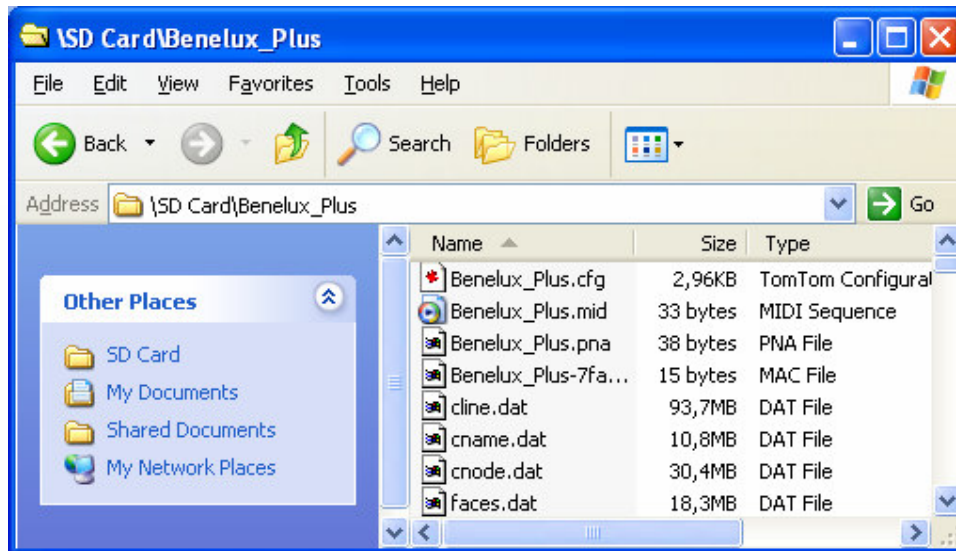
Press the Explore Icon to browse on your PDA.



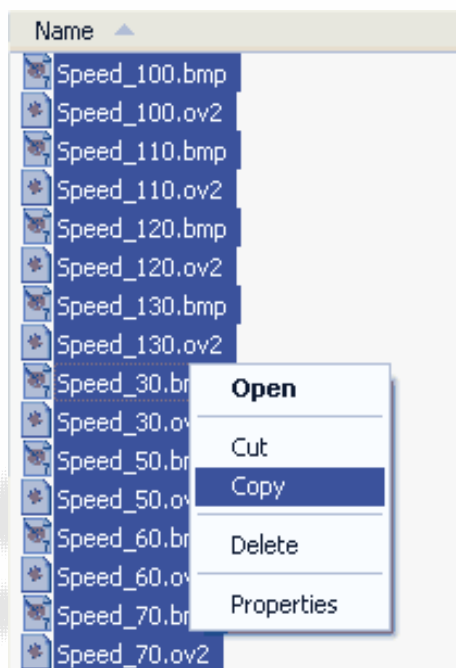
Click on MY Pocket PC to go to the root of your PDA.



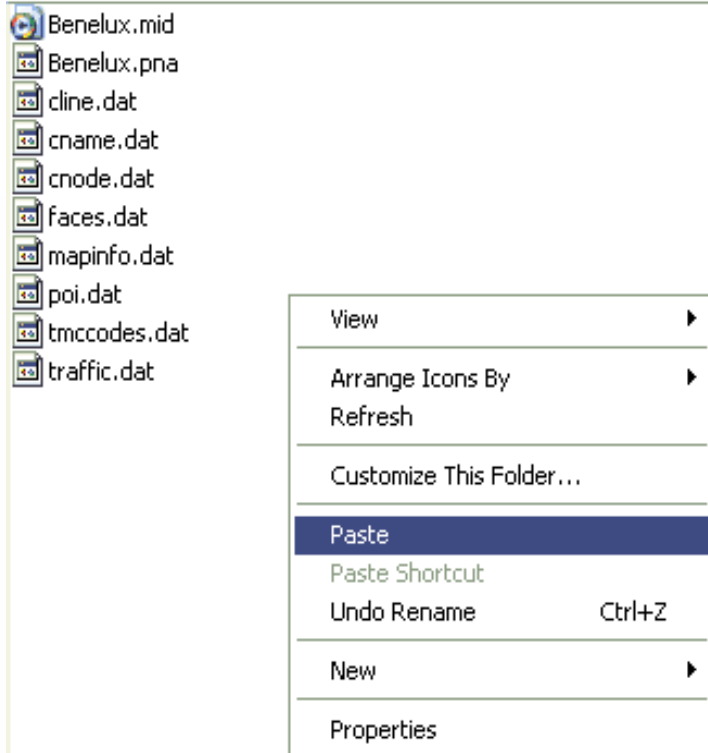
Your map data is stored on your storage card. This can be a SD Card or a CF Card. Select the correct map.



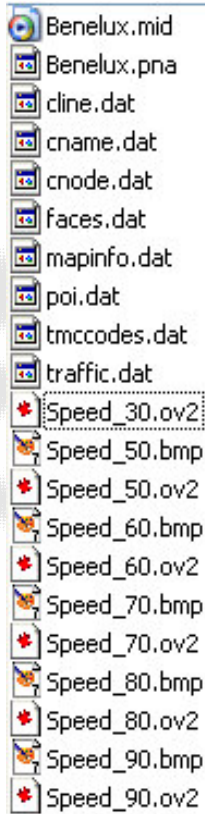
Go to the directory where you stored the extracted zip content. Select all the files using CTRL-A and copy them.



After this go to the country map folder on your PDA drive and paste them. For example Benelux-Plus folder.



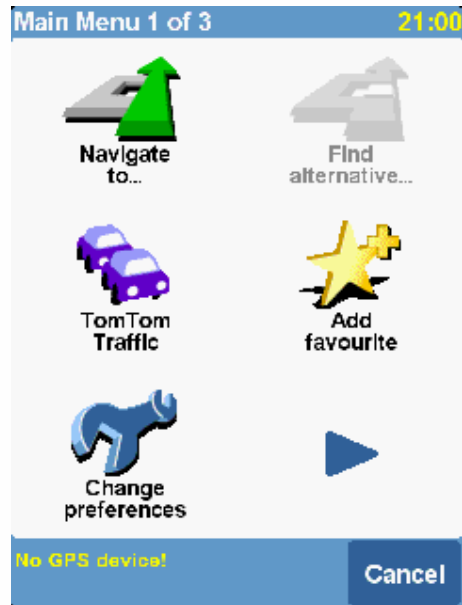
After paste the contents you directory looks something like this:



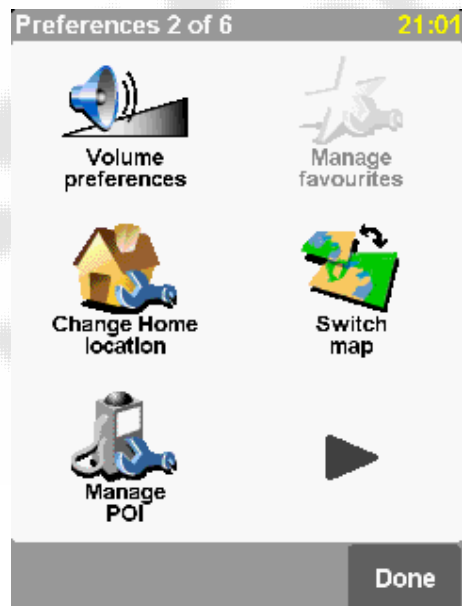
To enable POI's in your TomTom Navigator 5 you need to select them in your POI categories. They now are displayed on your TomTom Navigator 5 screen in both 3D maps and 2D maps.

POI Warning

To enable the POI Warning system in TomTom Navigator 5, select the screen.



Press the icon "Change Preferences"



Press the Icon "Manage POI"



Press the icon "Warn when near POI"



Select a POI Category

Warn when closer than: 21:02

250 metres


1 2 3 4 5

6 7 8 9 0

◀ Cancel Done

Fill in the distance and press Done.

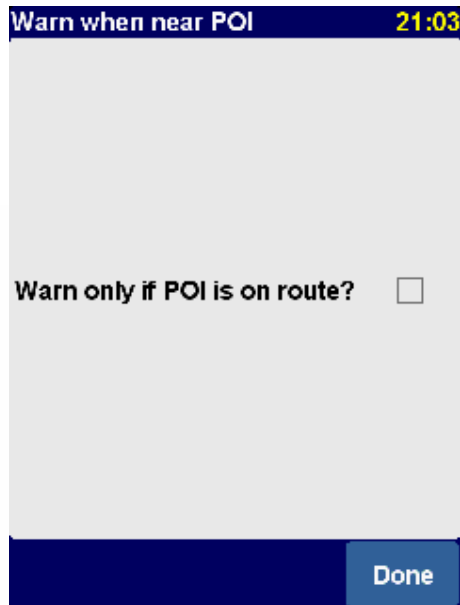
Select a warning sound 21:03



Boing

Test Select

Select a sound you would like to here.



Select if you would like to have a warning only when your POI is on the route. When deselected you will be warned when a POI is in the neighborhood.

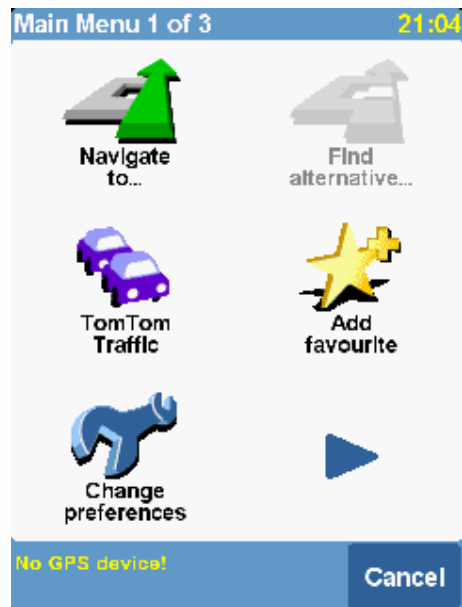
Now you are done and can repeat the steps for other POI Categories.



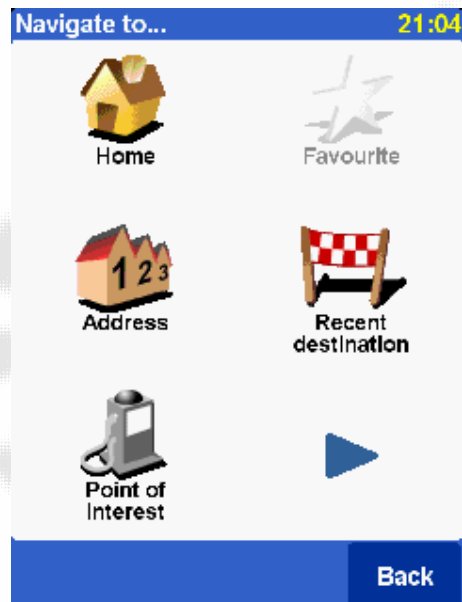
This screen will let you show on which poi categories you will be warned for.

Navigate to POI

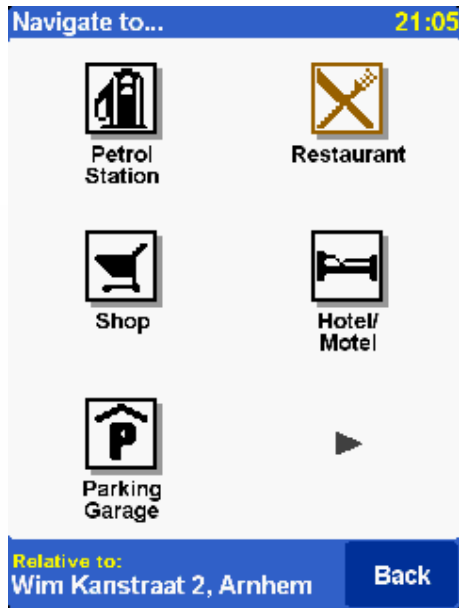
When you would like to navigate to a certain poi press on Navigate to..



This will show you the following screen:



Choose "Point of interest"



Select the arrow for finding your pois.



Choose one poi category



The screenshot shows a navigation menu with a blue header bar containing the text "Navigate to..." and a yellow time indicator "21:06". Below the header, there is a list of destinations with their distances in kilometers and names truncated. The list items are: "84.1 km [Breda] Nieuwe...", "84.9 km [Breda] Nieuwe...", "85.5 km [Breda] Nieuwe...", "85.6 km [Breda] Crogtelijk", "86.2 km [Aalsmeer] N201", "86.5 km [Aalsmeer] N201", "87.4 km [Breda] Backer e...", "87.5 km [Breda] Lunetstr...", "88.5 km [Amsterdam] Ha...", and "88.6 km [Amsterdam] Ant...". At the bottom of the menu, there is a blue bar with a keyboard icon on the left and a "Back" button on the right.

Select the destination.

Feedback

If you find any failures in this document or you have suggestions to improve it please send feedback to support@poihandler.com. Please mention the manual name and version number.