

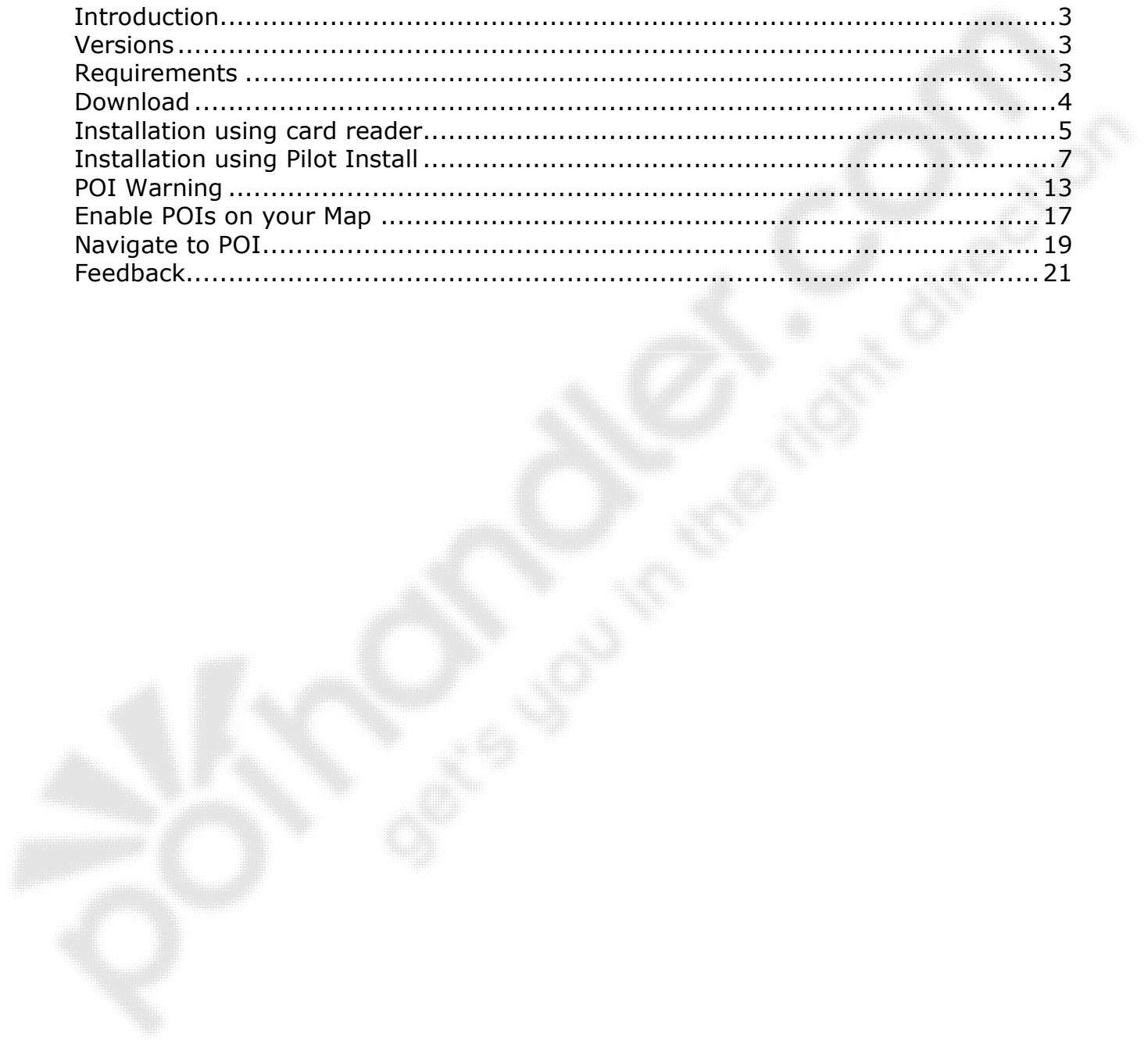
TomTom Navigator (PalmOS) POI Installation Guide

Author : POIHandler.com
Version : 1.0
Date : 24 March 2005

This manual was produced by POIHandler.com. Information in this document is subject to change without notice. Companies, names, and data used in examples herein are fictitious unless otherwise noted. No part of this document may be reproduced or transmitted in any form or by any means, electronic or mechanical, for any purpose, without the express written permission of POIHandler.com.

Contents

Introduction.....	3
Versions.....	3
Requirements	3
Download	4
Installation using card reader.....	5
Installation using Pilot Install	7
POI Warning	13
Enable POIs on your Map	17
Navigate to POI.....	19
Feedback.....	21



Introduction

This manual explains how to install external Point of Interest from POIHandler.com to TomTom Navigator for the PalmOS.

Versions

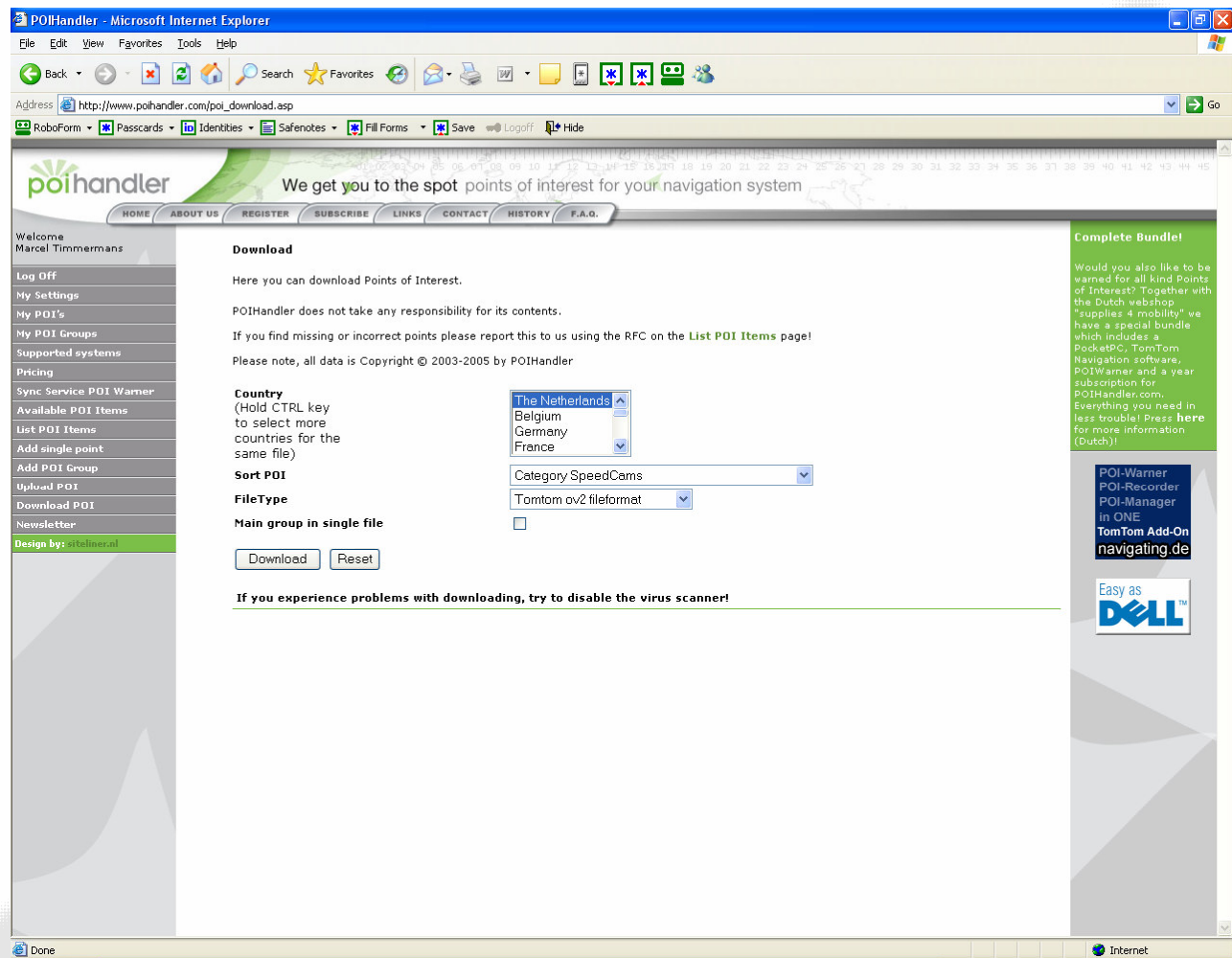
Version	Date	Author
1.0	24-03-2005	Marcel Timmermans, POIHandler.com

Requirements

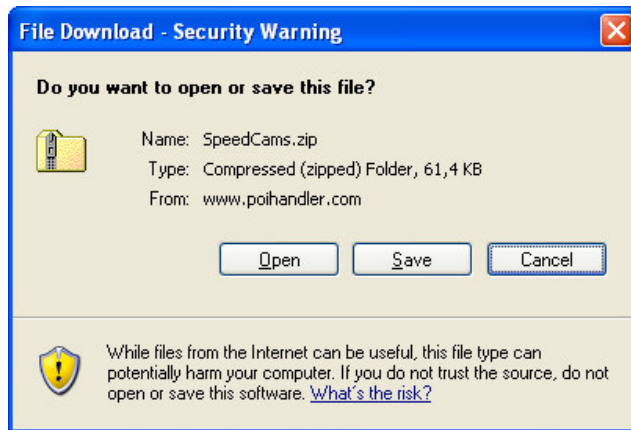
You need a computer that is connected to the internet. In addition to this you need to have your Palm device with TomTom Navigator (version 4.40 and above) connected to your computer.

Download

The first step is going to poihandler.com and login to the website. Select from the left menu "Download POI". This will give you the following screen:



Select the country and for the sort POI for example Speedcams. The filetype must be TomTom ov2 format. Press "Download" to download the zip file. Save the file on your computer by selecting "save" when prompted.

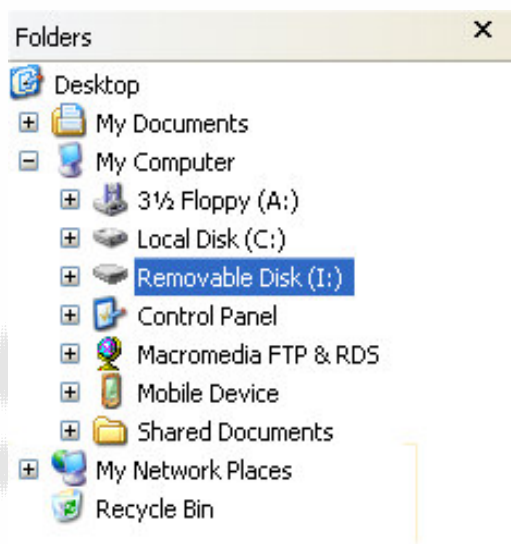


Save the file in a place where you can easily find it again. Unzip the contents.

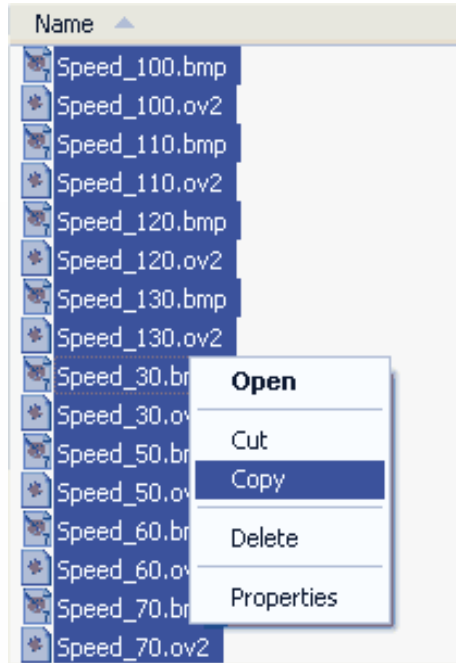
Installation using card reader

Connect your card reader to your PC.

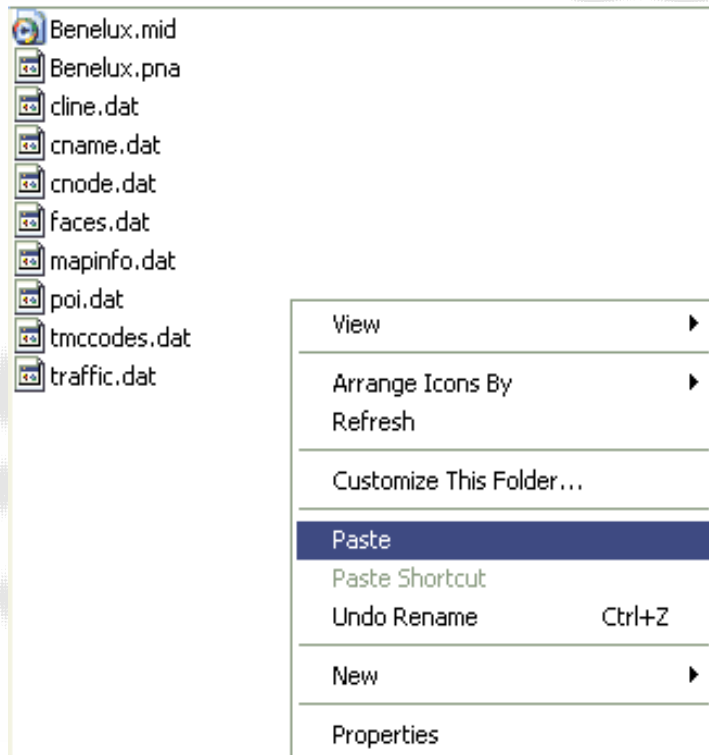
You will find your card in explorer as a removable drive. In this case drive I



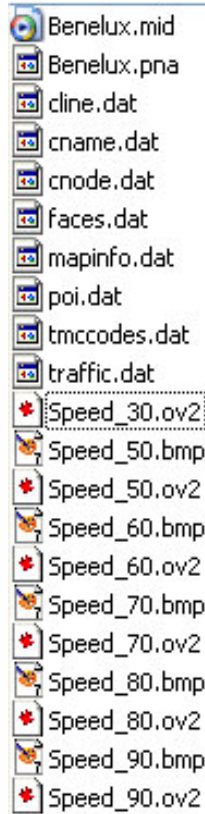
Go to the directory where you stored the extracted zip content. Select all the files using CTRL-A and copy them.



After this go to the country map folder on your TomTom Navigator drive and paste them to the country specific folder. For example Benelux-Map folder.



After paste the contents you directory looks something like this:



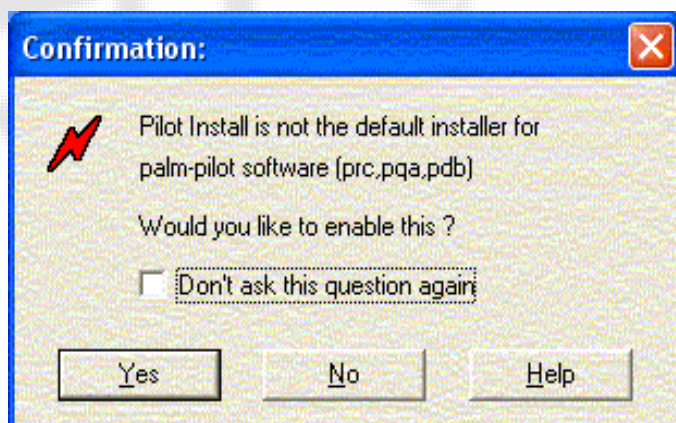
Continue a chapter display overlays.

Installation using Pilot Install

First download and install the application Pilot Install to your PC. You can find a copy of it on the internet.

For example at <http://envicon.com/e/pinstall/pinstall.html>

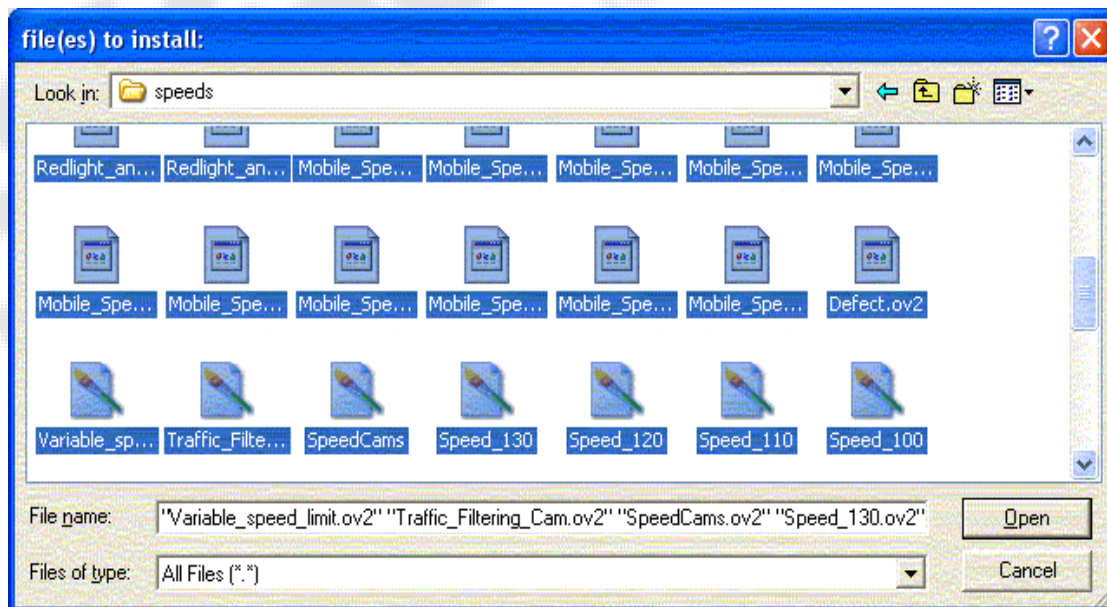
After the first start of the program you will get the following screen



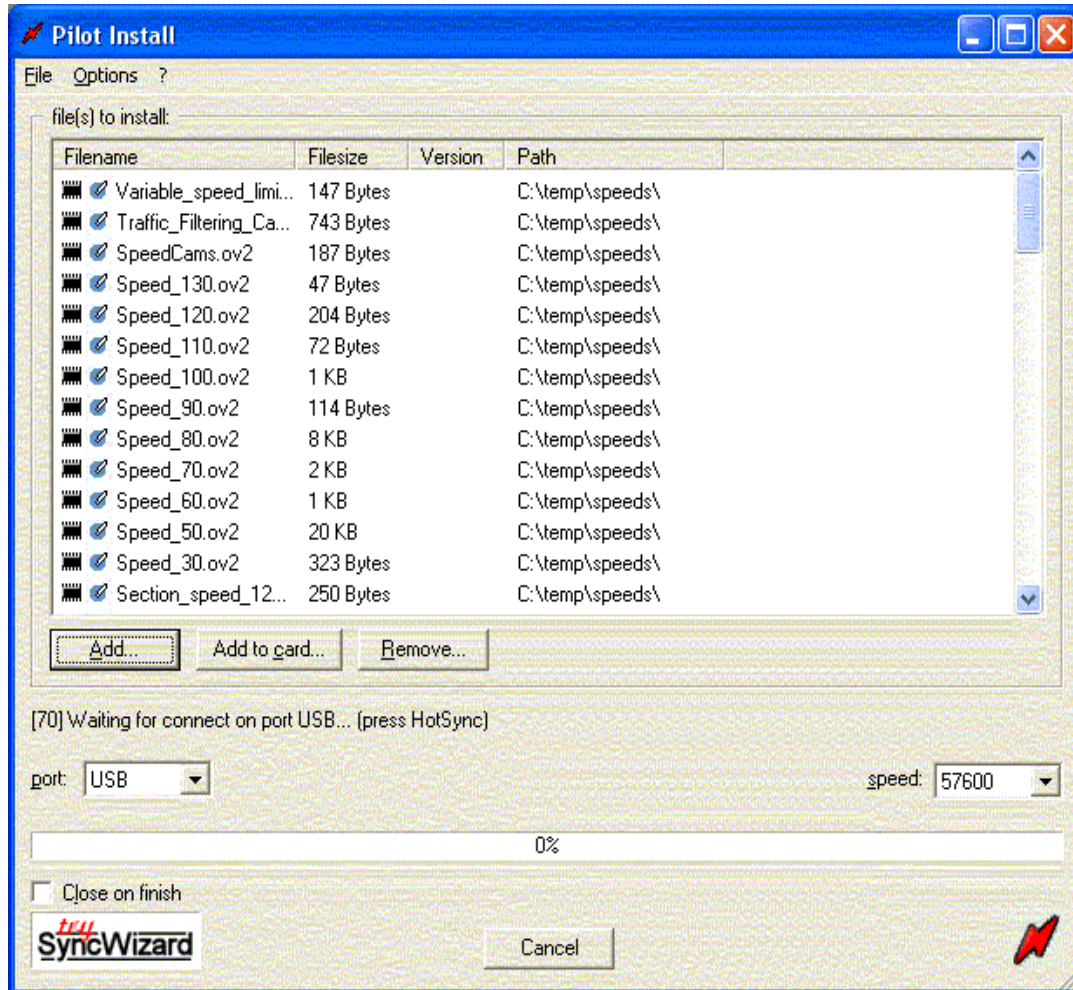
Check the checkbox and select no and the following screen will be displayed.



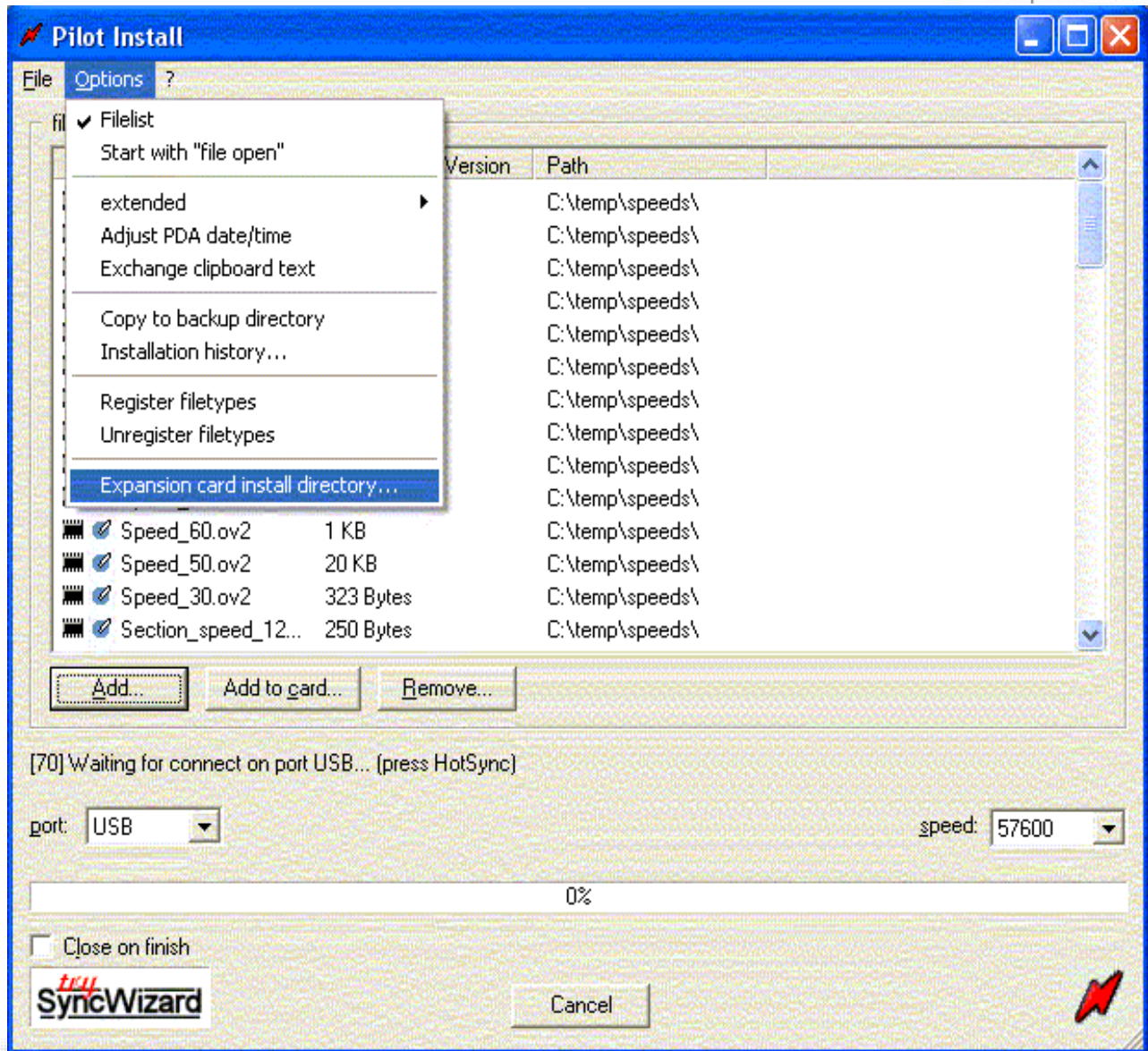
Select Add to card..



Go to the directory where you stored the extract of the zip contents. Select them all and press Open.



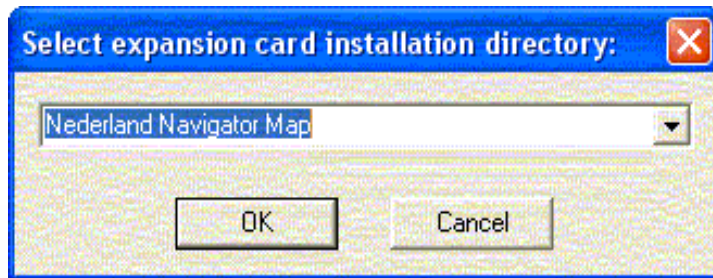
All files are now loaded into the Pilot program.



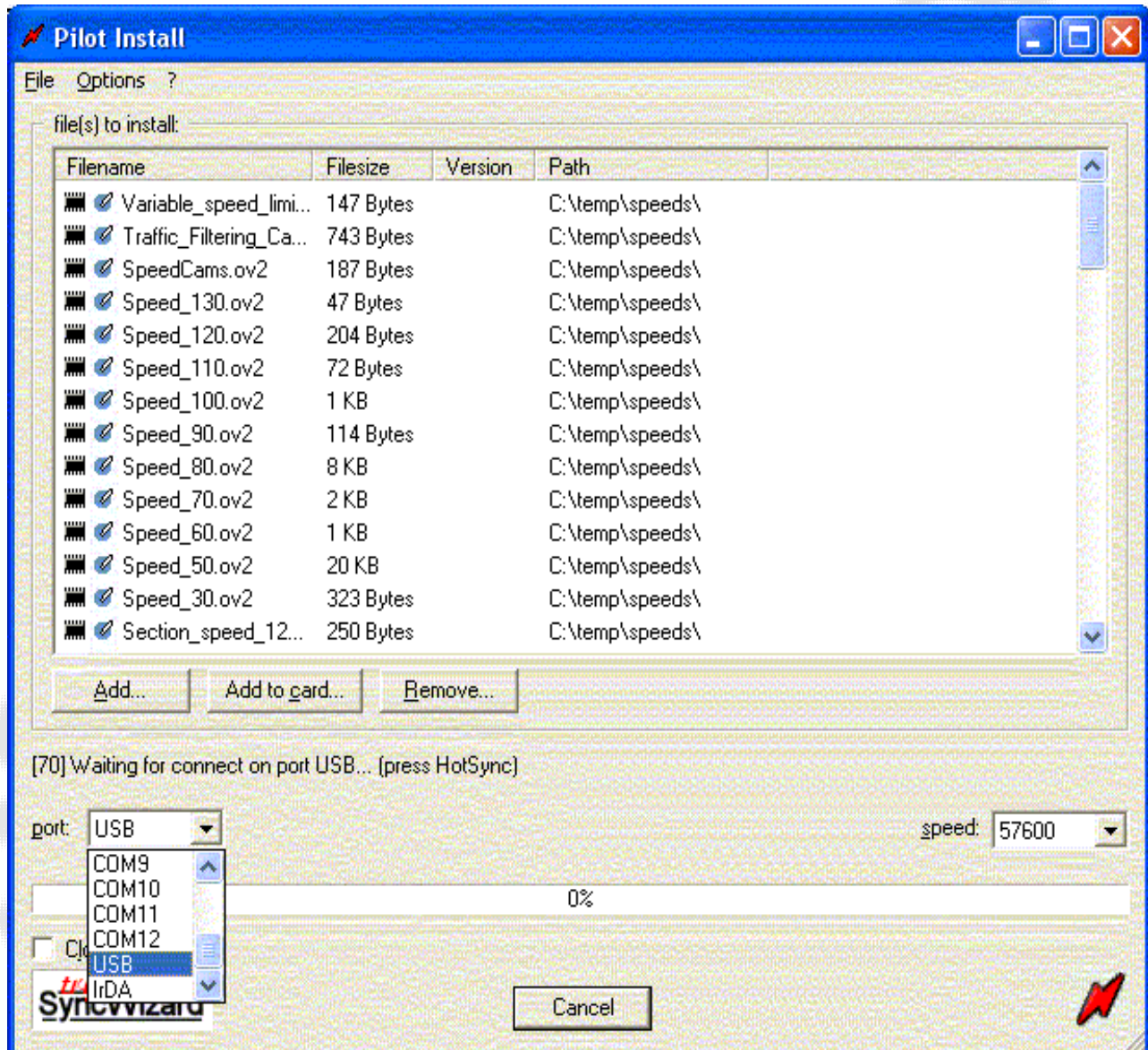
Go to Options to select the directory where the files need to be stored on the expansion card. This must be the exact map name! So make sure the map exists.

On our card we have used the map of the Netherlands.

The following list gives some possibilities: Benelux-Map, Great_Britain-Map, Spain-Map/Iberia-Map, Deutschland-Map, Scandinavia-Map, Italia-Map, France-Map or Alpen-Map

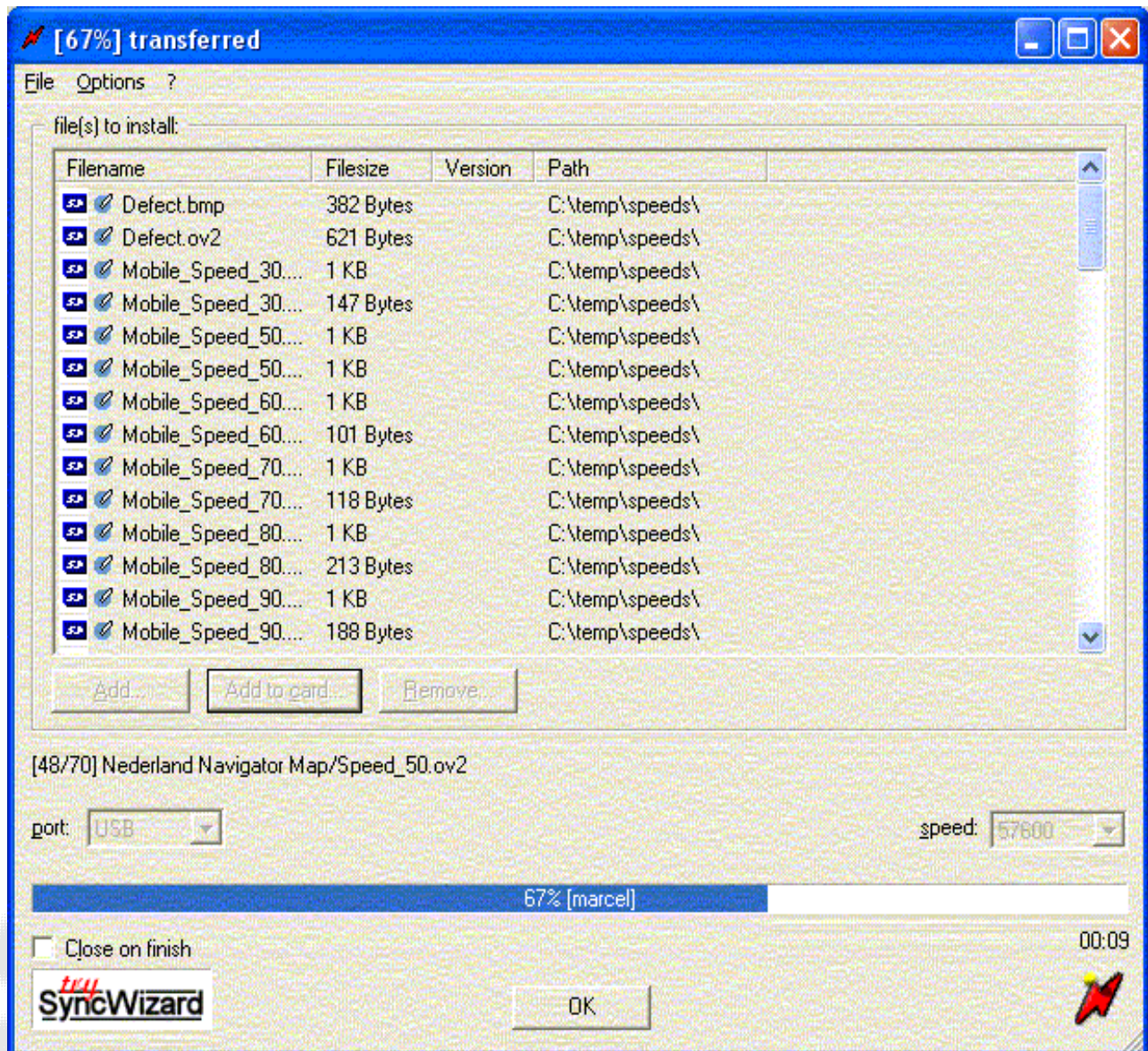


Press ok to continue.



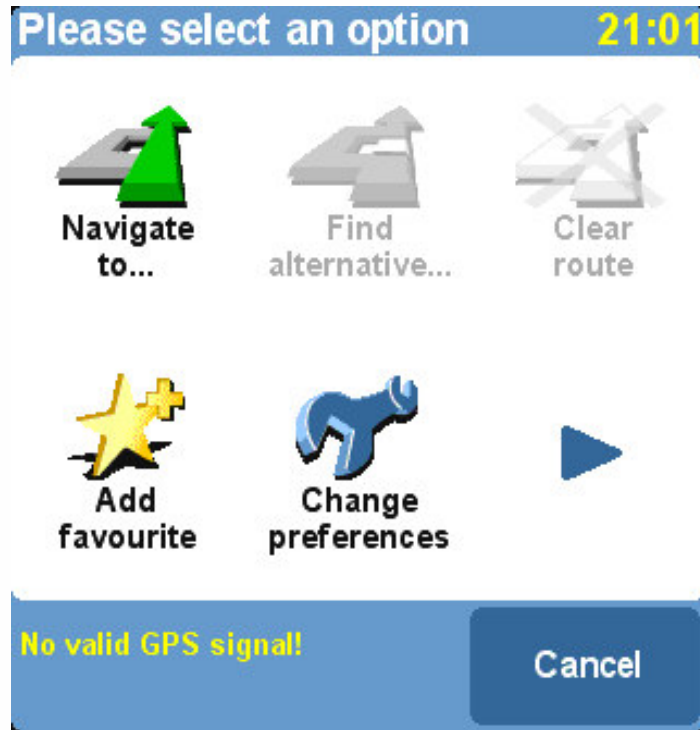
The next thing you need to do is select the correct port. In our case this is the USB port.

Perform a Hotsync® operation. The POI files will be copied to the correct folder



POI Warning

To enable the POI Warning system in Palm OS, select the screen.



Press the icon "Change Preferences"

Preferences 2 of 5 21:01



Change volume



Maintain favourites



Change Home location



Switch map



Maintain POI



Done

Press the Icon "Maintain POI"

Maintain POI 21:01



Add POI



Warn when near POI



Delete POI



Add POI Category



Enable/Disable POI

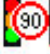




Delete POI Category

Done

Press the icon "Warn when near POI"

POI Category:

-  Redlight and 90
-  Redlight and Speed
-  RedLightCam

A	B	C	D	E	F
G	H	I	J	K	L
M	N	O	P	Q	R
S	T	U	V	W	X
Y	Z		◀	123	Cancel

Select a POI Category

Warn when closer than: 21:02

250 meters

1	2	3	4	5
6	7	8	9	0
◀	Cancel	Done		

Fill in the distance and press Done.

Select a warning sound 21:02



Select a sound you would like to here.

Warn when near POI 21:02

Warn only if POI is on route?

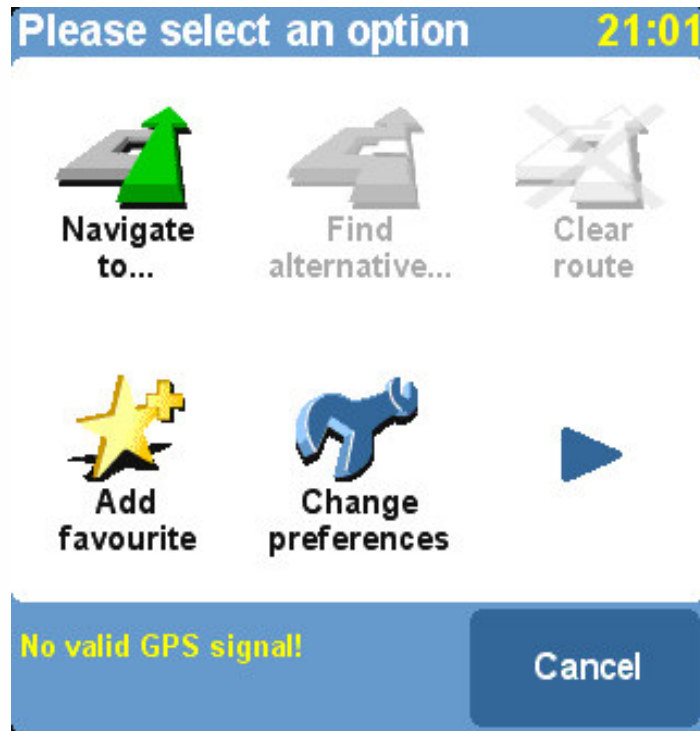
Done

Select if you would like to have a warning only when your POI is on the route. When deselected you will be warned when a POI is in the neighborhood.

Now you are done and can repeat the steps for other POI Categories.

Enable POIs on your Map

To enable the POI's on you map, select the screen.







Press the icon "Change Preferences"



Press Maintain POI.

Maintain POI 21:01


 **Add POI**  **Warn when near POI**  **Delete POI**


 **Add POI Category**  **Enable/Disable POI**  **Delete POI Category**


Done

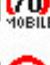
Press Enable/Disable POI

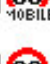
Mark the POI to display: 21:02


 **Mobile Speed 30**


 **Mobile Speed 50**


 **Mobile Speed 60**

 **Mobile Speed 70**

 **Mobile Speed 80**

 **Mobile Speed 90**

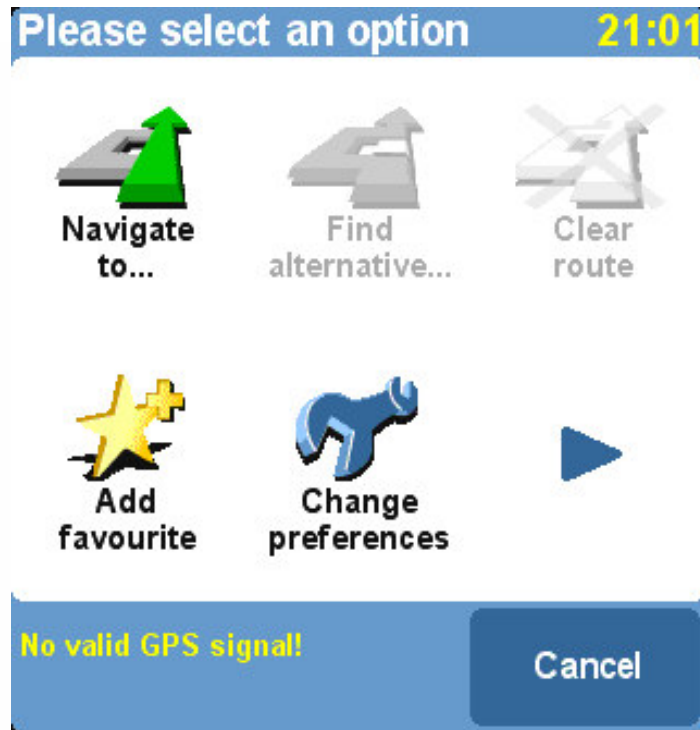
 **Mobile Speedcam**

 **Done**

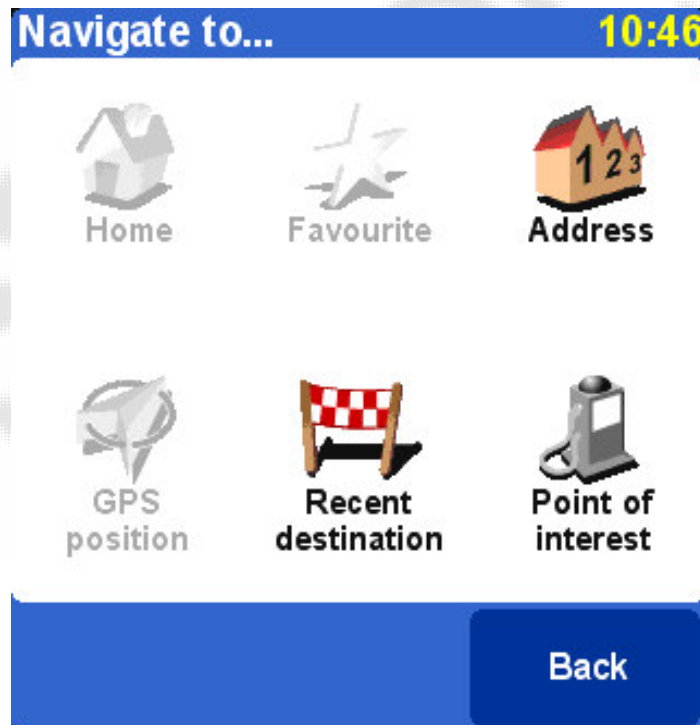
Mark the poi's to display and select done.

Navigate to POI

When you would like to navigate to a certain poi press on Navigate to..



This will show you the following screen:



Choose "Point of interest"

Navigate to... No valid GPS signal!

 Government Office

 Mountain Peak

 Open Parking

 Parking Garage



 Petrol Station






Relative to:
Zoelensestraatje 3, Z... [Back](#)

Select the arrow for you own POI's

POI Category:

 Redlight and 90 

 Redlight and Speed

 RedLightCam 

A	B	C	D	E	F
G	H	I	J	K	L
M	N	O	P	Q	R
S	T	U	V	W	X
Y	Z		◀	123	Back

Choose one poi category



The screenshot shows a navigation application interface. At the top, there is a blue header bar with the text "Navigate to..." on the left and "10:47" on the right. Below the header is a list of destinations, each with a distance and a name in brackets followed by a route number. The destinations are: "0 m [Almere] S101", "17.2 km [Vreeland] N201", "17.4 km [Amsterdam] E35", "18.6 km [Loenersloot] N201", "25.6 km [Bilthoven] Doctor...", "25.8 km [De Bilt] Soestdijk...", and "26.0 km [Uithoorn] Groene...". To the right of the list is a vertical scrollbar with a grey track and a white triangle. At the bottom of the screen is a blue bar containing a keyboard icon on the left and a "Back" button on the right.

Distance	Destination	Route
0 m	[Almere]	S101
17.2 km	[Vreeland]	N201
17.4 km	[Amsterdam]	E35
18.6 km	[Loenersloot]	N201
25.6 km	[Bilthoven]	Doctor...
25.8 km	[De Bilt]	Soestdijk...
26.0 km	[Uithoorn]	Groene...

Select the destination.

Feedback

If you find any failures in this document or you have suggestions to improve it please send feedback to support@poihandler.com. Please mention the manual name and version number.