

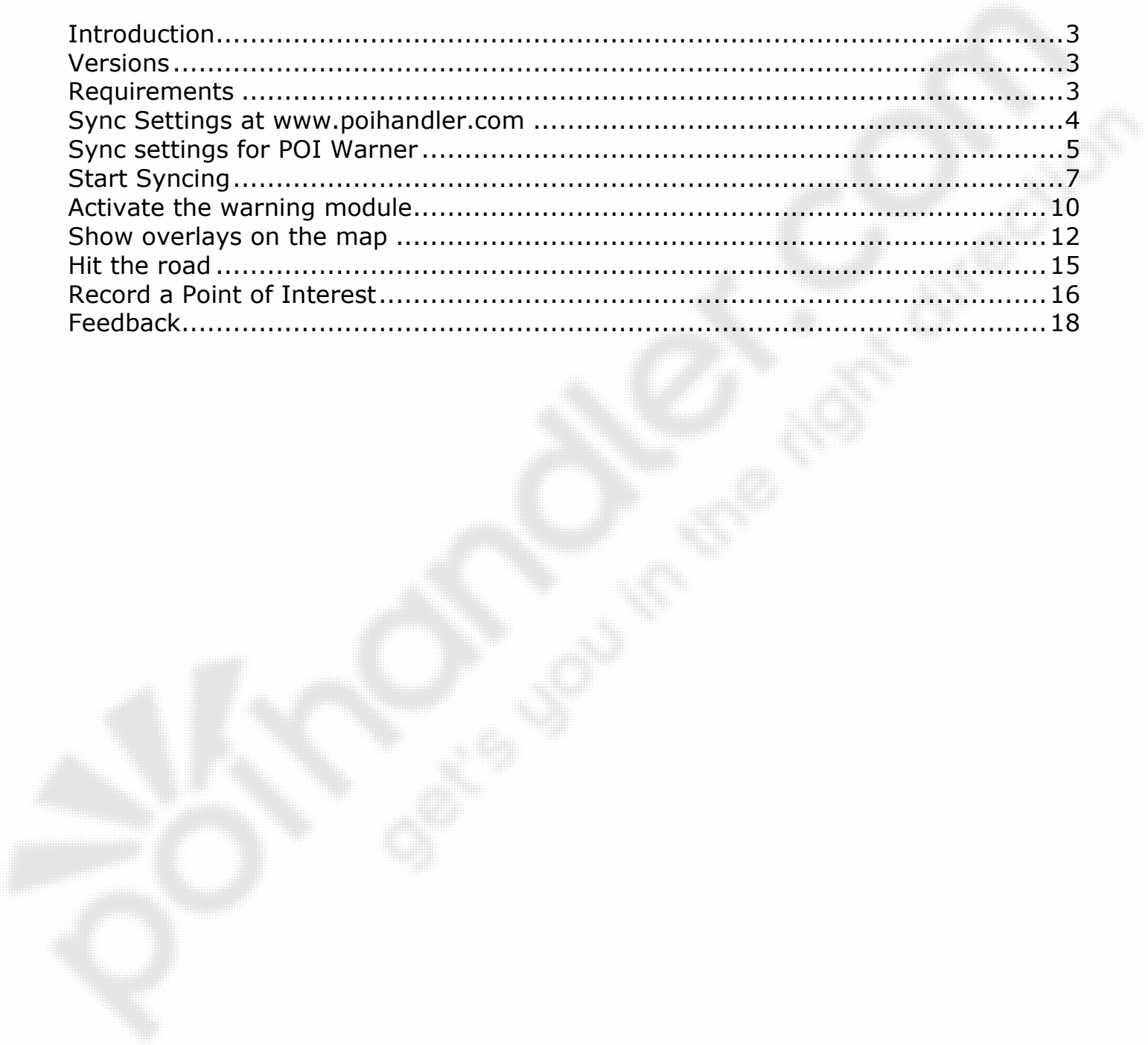
Engin POI Installation Guide

Author : POIHandler.com
Version : 1.0
Date : 23 March 2005

This manual was produced by POIHandler.com. Information in this document is subject to change without notice. Companies, names, and data used in examples herein are fictitious unless otherwise noted. No part of this document may be reproduced or transmitted in any form or by any means, electronic or mechanical, for any purpose, without the express written permission of POIHandler.com.

Contents

Introduction.....	3
Versions.....	3
Requirements	3
Sync Settings at www.poihandler.com	4
Sync settings for POI Warner.....	5
Start Syncing.....	7
Activate the warning module.....	10
Show overlays on the map	12
Hit the road	15
Record a Point of Interest.....	16
Feedback.....	18



Introduction

This manual explains how to install external Point of Interest from POIHandler.com to Engin.

Versions

Version	Date	Author
1.0	23-03-2005	Marcel Timmermans, POIHandler.com

Requirements

Your PDA must be connected to the internet. In addition to this you need POI Warner from the firm www.navigating.de and Engin 4 (www.engin.nl) installed on your PDA.

- Make sure you are registered at www.poihandler.com
- For speedcams a subscription is needed on www.poihandler.com

Sync Settings at www.poihandler.com

The first step is going to www.poihandler.com and login to the website. Select from the left menu "Sync Service POI Warner". This will give you the following screen:

POIHandler - Microsoft Internet Explorer

File Edit View Favorites Tools Help

Address <http://www.poihandler.com/syncsrv.asp>

Navigation software, POIWarner and a year subscription for POIHandler.com. Everything you need in less trouble! Press [here](#) for more information (Dutch)!

"You are driving too fast!!!"

Easy as DELL™

Sync Service POI Warner

This service offers all the POI's (Overlays) in Europe and USA except Germany, Austria and Switzerland. **Notice:** For using speedcams you need to take a **subscription** at poihandler.com the rest of the POI's are for free!! Please take a look to the **overview** page to see what POI's are available right now!

Notice : We do not sell POI-Warner. Therefore you need to go to www.navigating.de.

How do I get POI's (Overlays) of the countries Germany, Austria and Switzerland?

POI-Warner has second sync partner, which support those countries. The German website www.pocketnavigation.de offers likewise the sync service for those countries. To use this you must register on their website. A common registration is not possible at the moment.

How does this synchronization service function?

As soon as an on-line connection between the Pocket PC and www.poihandler.com exists (e.g. through GPRS or Activesync which is connected by a pc on the internet) all available Points Of Interests on POIHandler will be represented in the appropriate main groups on POI-Warner. All marked Points of Interest are downloaded (synchronized) automatically or manually to the appropriate selected map folder(s). New Points of Interest can be added either with POI-Warner or directly from the navigation software. Existing Points of Interest can be edited or if no longer current anymore deleted. The local changes can then be synchronized (automatically or manually) during the next online connection to www.poihandler.com. After that the changes are immediately available for all users.

10 Steps to get synchronization working!

1. Download **POI-Warner** Version 2 or above from Markus Schwarzkopf.
2. Install this on your Pocket PC. If this is a free upgrade continue with step 5
3. The Pocket PC Installation ID (CPU ID) determined after the installation is needed during purchase/registration in the next step.
4. Purchase/registration of POI-Warner's Version 2 or above. This product is from www.navigating.de! POIHandler.com does not sell this!
5. Fill in your information below (username for poiwarner, Number of Transaction and Pocket PC Installation-ID).
6. Fill in your username in POI-Warner Version 2 menu "POI-Sync/POI-Selection/Extras/Settings". This is the same username as filled in below!
7. Make sure you have a direct internet connection on your PDA and you are able to open a web-page in the PDA-Internet-Explorer.
8. Choose in the POI-Warner Version 2 menu "POI-Sync/POI-Selection"
9. Choose from the Category menu the group you would like to synchronize
10. Mark in the field below the items you would like to synchronize and hit "Start Synchronization"

E-Mail: info@poihandler.com

Username in POI-Warner (anything you like):

Number of Transaction *:

Pocket PC Installation-ID *:

* This information you will find in your E-Mail from [navigating.de](http://www.navigating.de) with subject "Your POI-Warner (for TomTom Navigator) Register-code"

Please check for accepting the terms and conditions below:

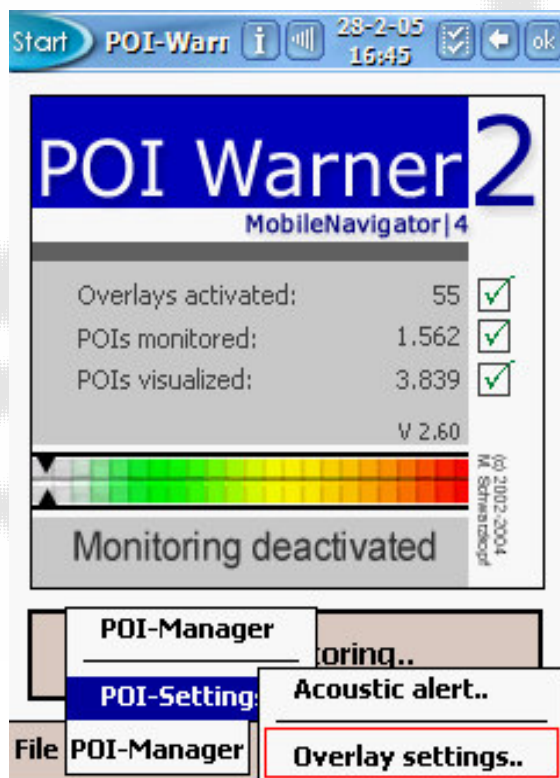
Please fill in the boxes with the correct information. The needed information you will find in the e-mail that is send when you buy POI Warner from the firm www.navigating.de

E-Mail	Richard@smith.com	
Username in POI-Warner (anything you like)	<input type="text" value="Richard_Smith"/>	Dear Richard Smith,
Number of Transaction *	<input type="text" value="456789123452"/>	Thank you for the order.
Pocket PC Installation-ID *	<input type="text" value="35788700477X"/>	Here are the needed information for registering the POI-warner (for XXX Edition) and for later Updates / Re-Registrations:
Please check for accepting the terms and conditions below	<input type="checkbox"/>	Register-code: 789456123
<input type="button" value="Ok"/>		Number of Transaction: <input type="text" value="456789123452"/>
		Pocket PC Installation-ID: <input type="text" value="35788700477X"/>

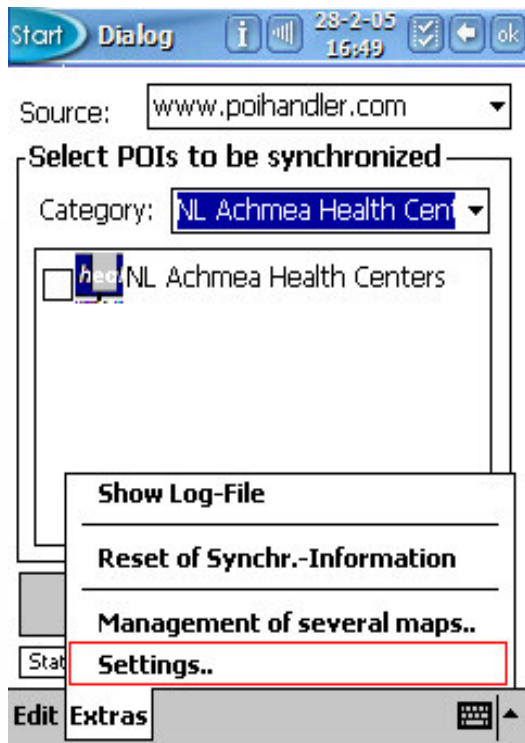
Check the checkmark for accepting the terms and conditions and press ok.

Sync settings for POI Warner

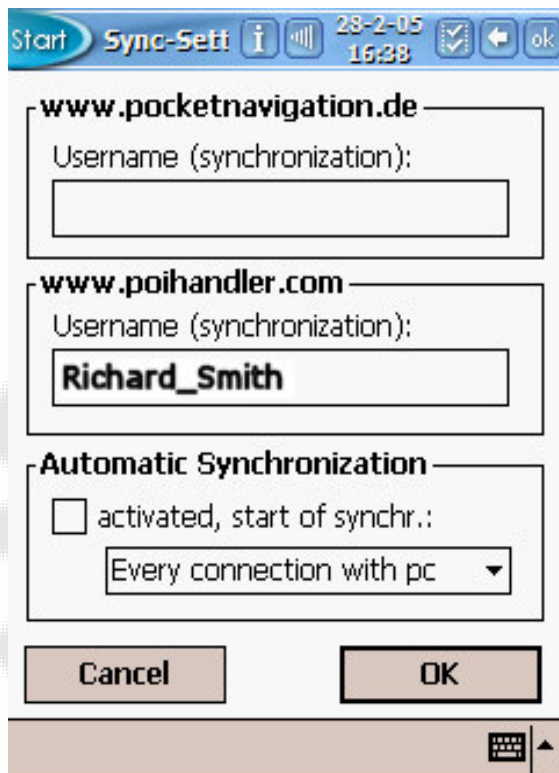
Start POI Warner.



Select POI-Manager/POI-Settings/Overlay settings..



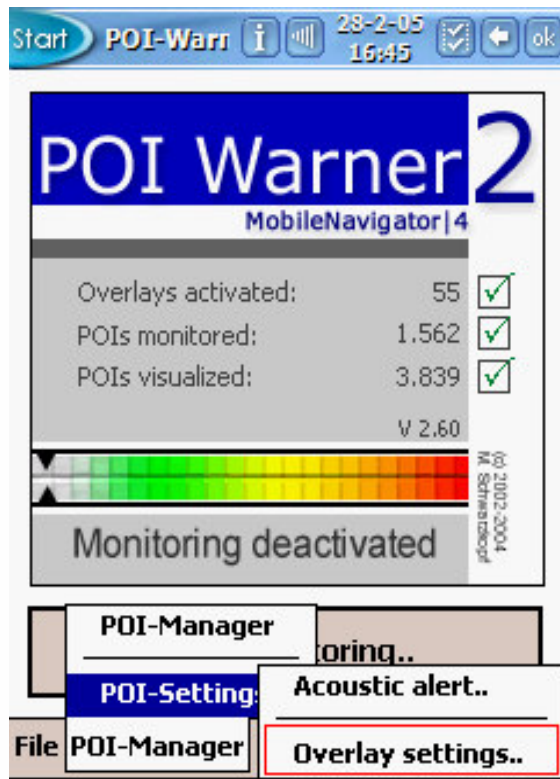
Select Settings.. to fill in your username



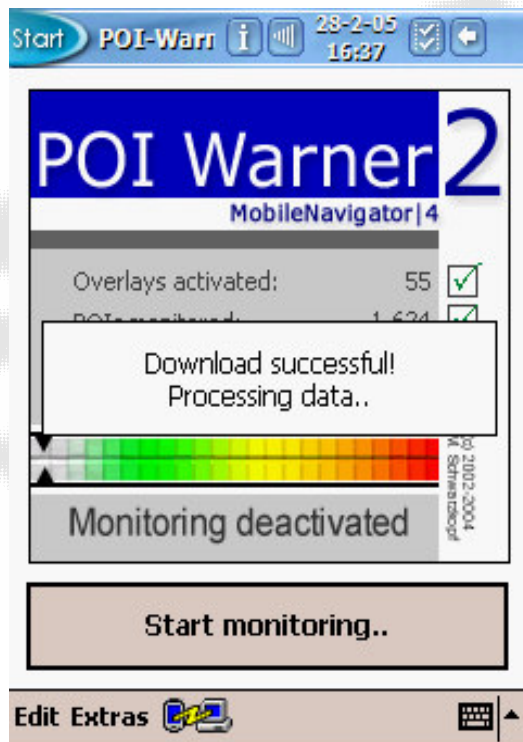
Press ok to continue.

Start Syncing

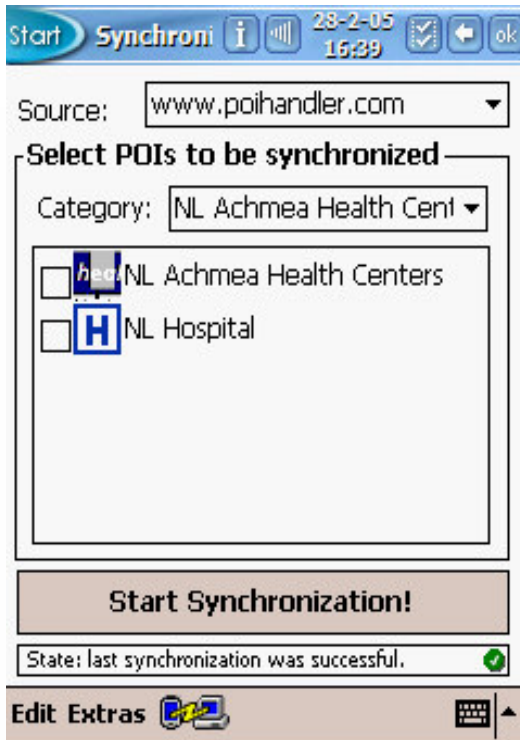
Start POI-Warner.



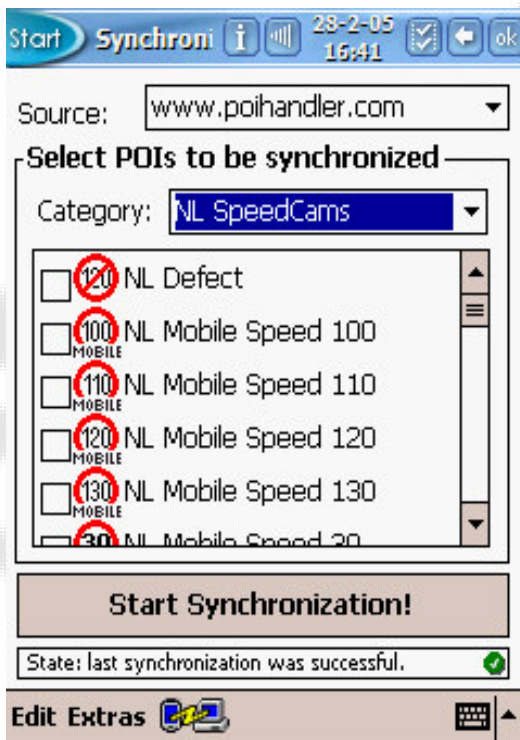
Select overlay settings..



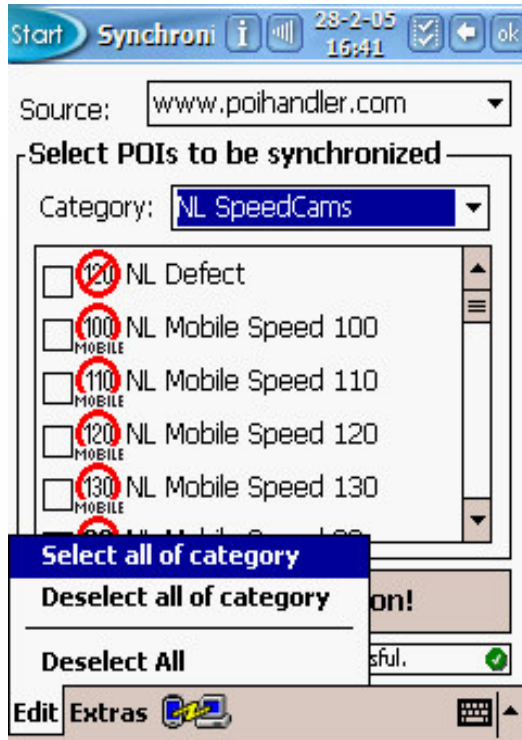
At this moment the list with Category's will be loaded (This could be very quick and therefore not visible).



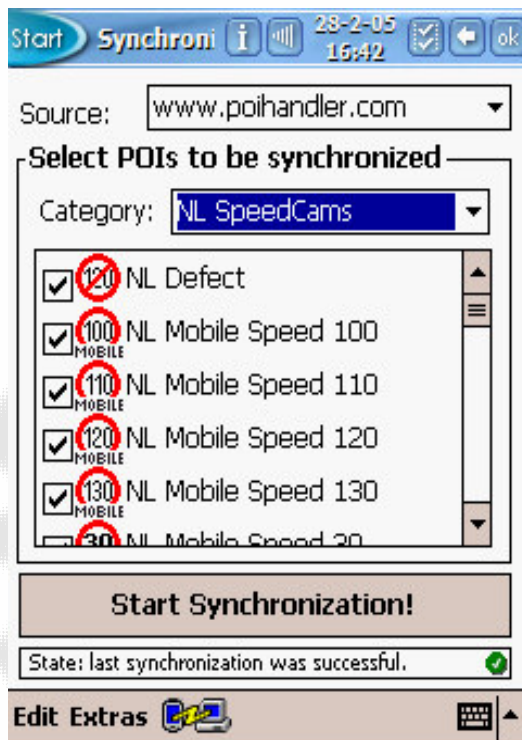
Select from the Category the group with POI's you would like to sync.



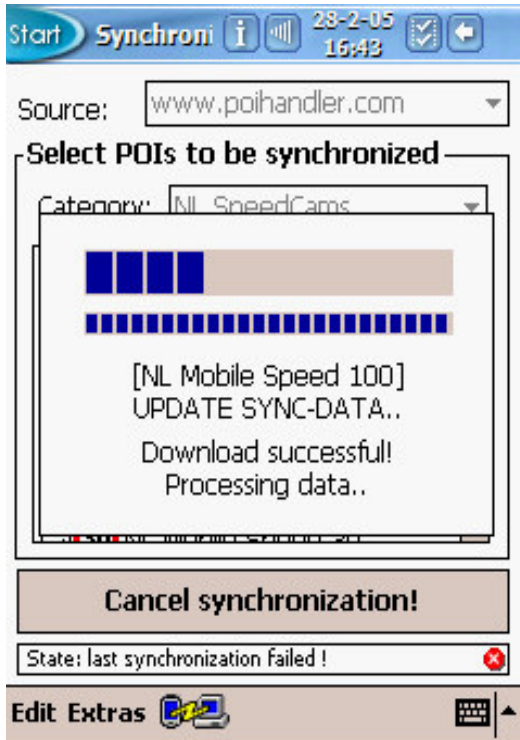
f.e. Speedcams.



Press Select All of category to sync all items in the group.



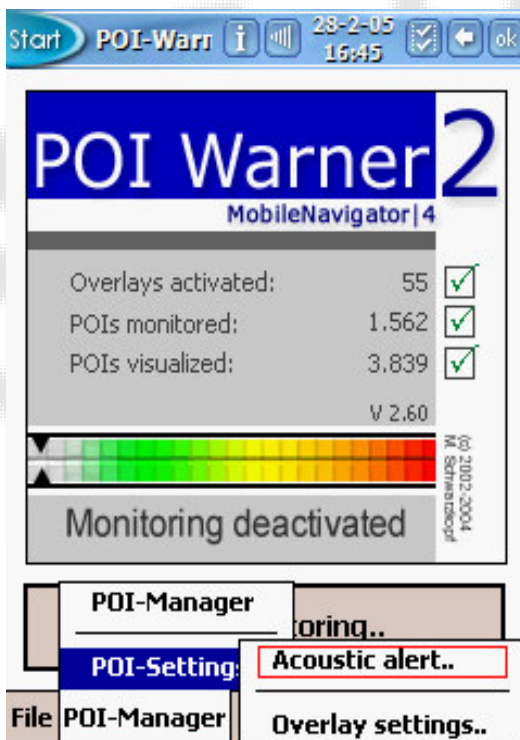
This will select them all. Press "Start Synchronization" to get the items to your PDA and new one to our server.



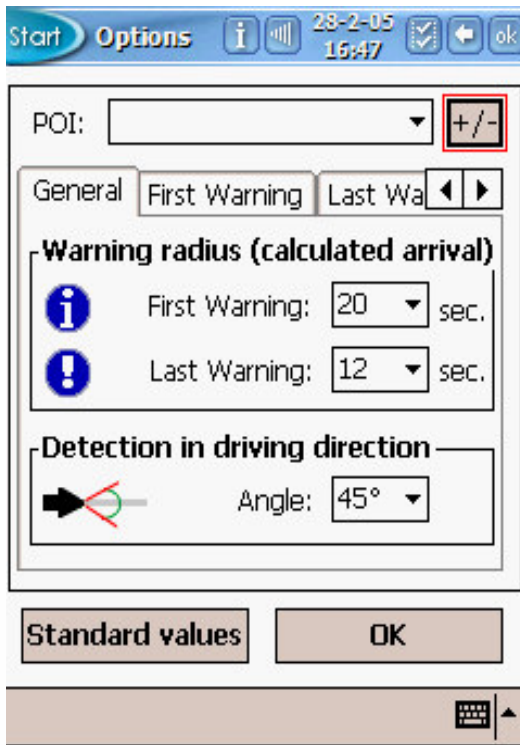
Here you can see that the sync process is running. After finishing the state bar must mention that the sync was successful.

Activate the warning module

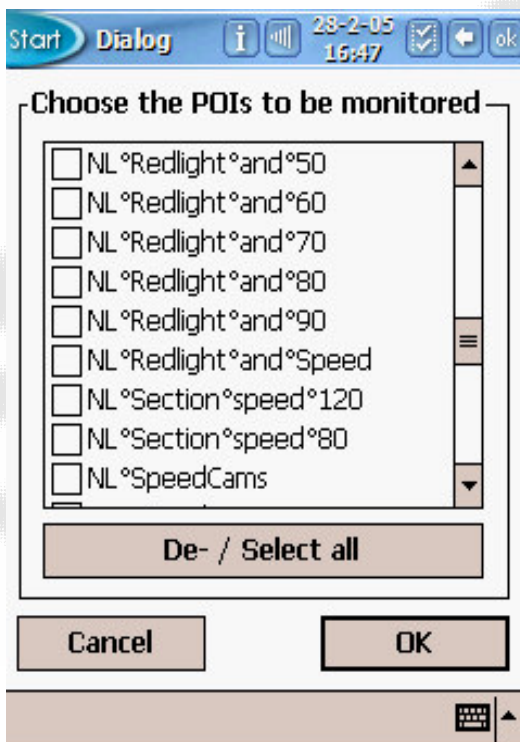
Start POI Warner.



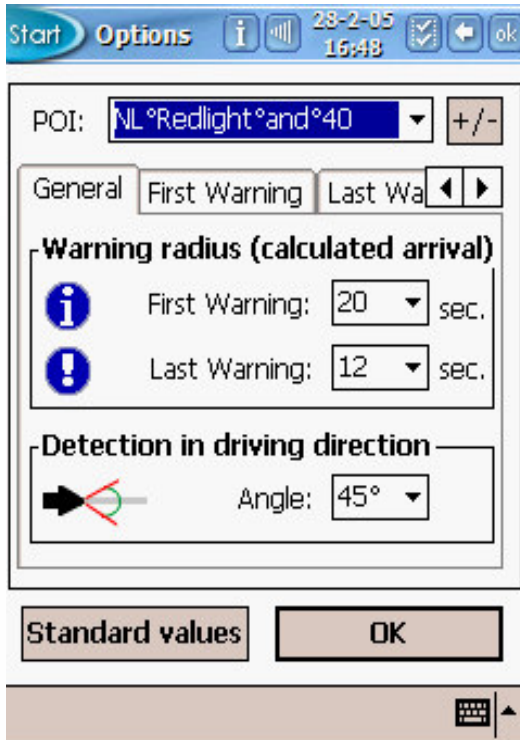
Select Acoustic alert from the menu item.



Select the +/- button to add the items to the warning module.



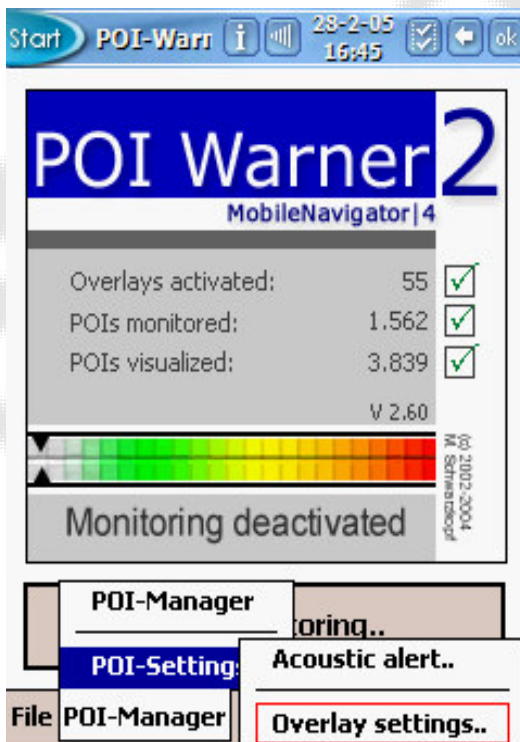
Select from the list the items on which pois you would like to get a warning.

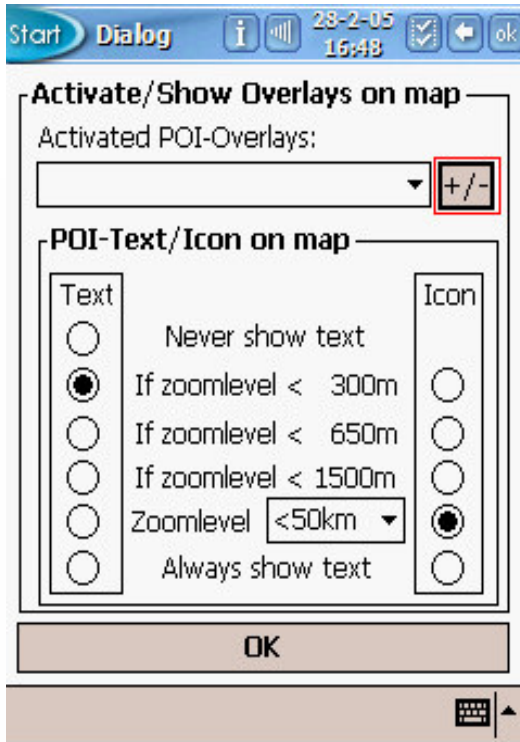


You can fine tune the settings if you like. But the default should be just fine.

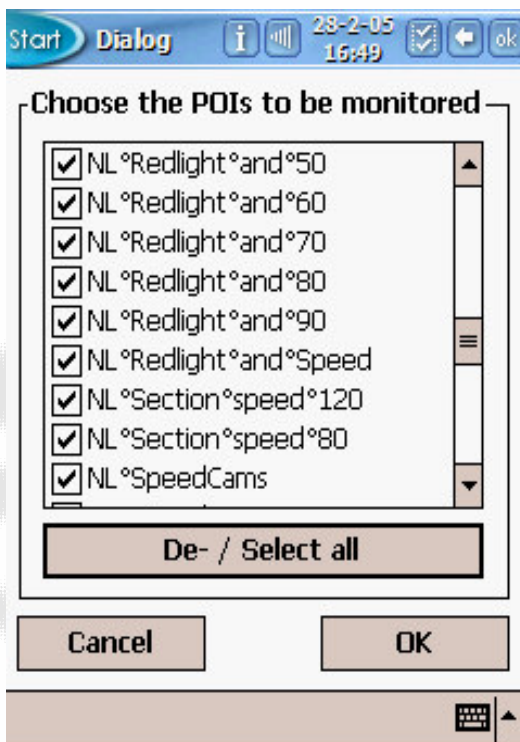
Show overlays on the map

Start POI Warner

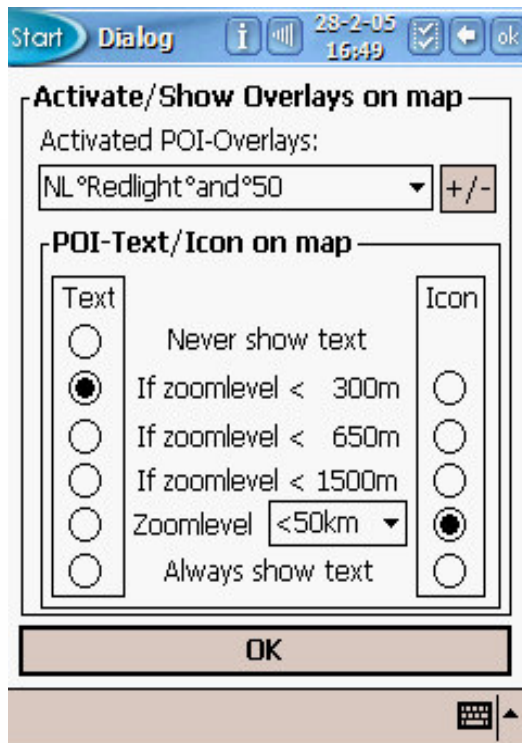




Select the +/- button to add the groups



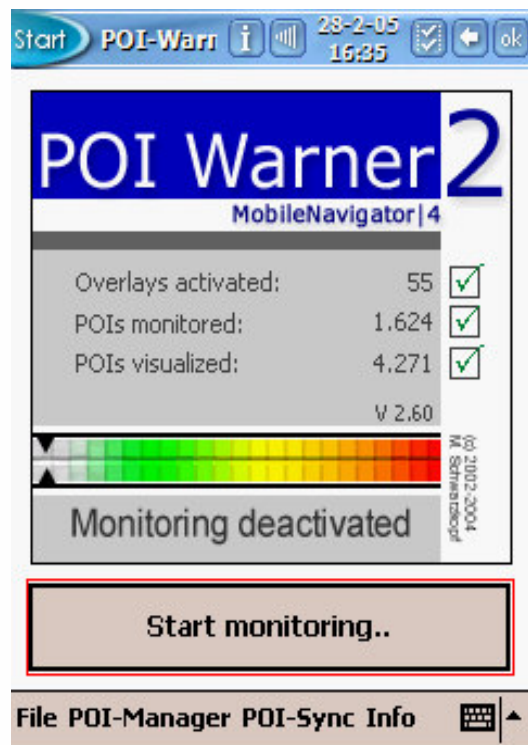
Select the overlays that you would like to be visible on the map.



After selecting the overlays you can change the settings but the defaults are just fine. Press ok to accept the settings.

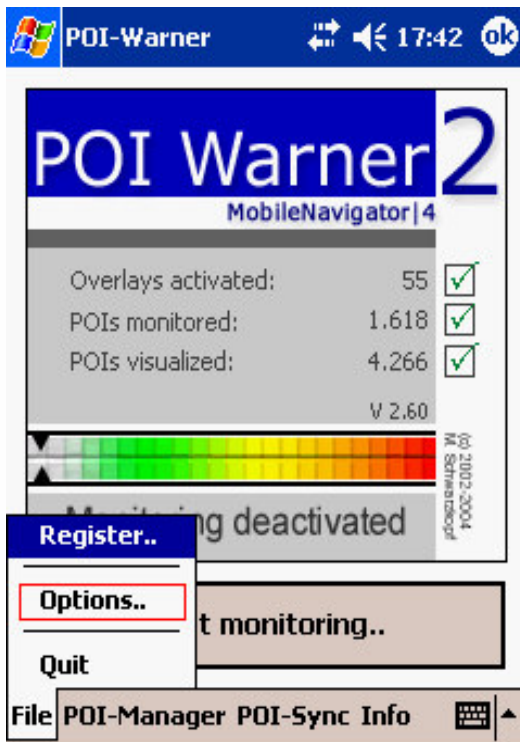
Hit the road

To activate the warning module and the overlays on the map select start Monitoring.

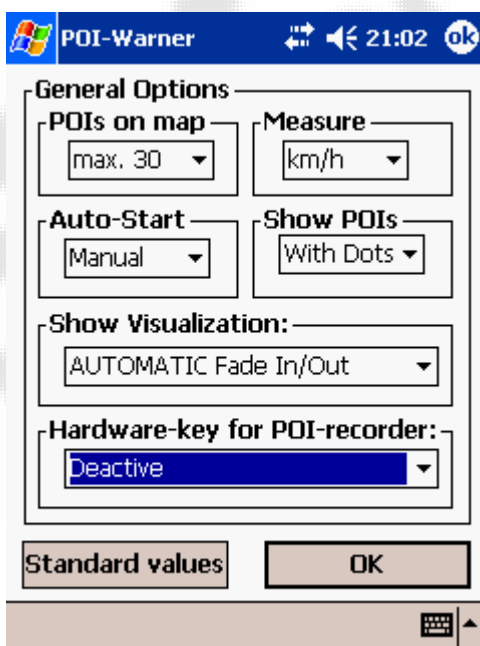


When POI Warner is activated you will see a small green rectangle in the bottom left corner.

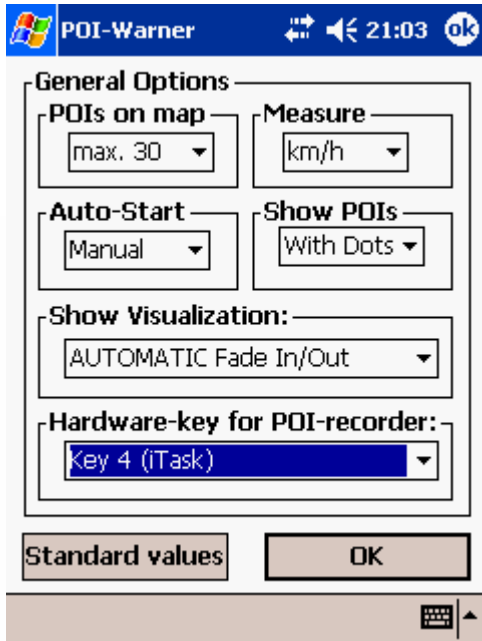
Record a Point of Interest



Go to File/Option to set the hardware-key for POI Recorder

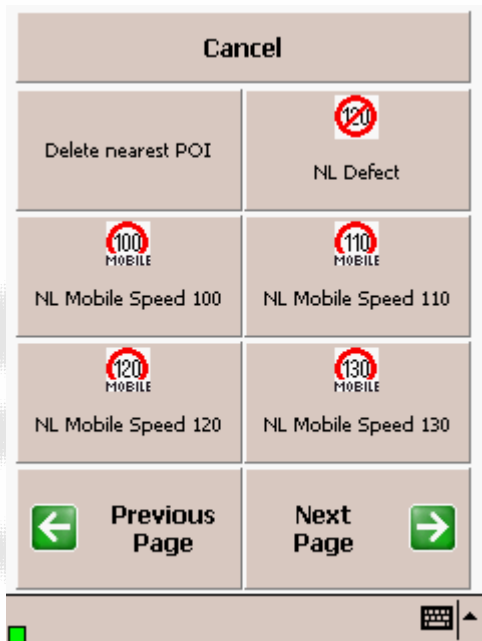


Select the key you would like to have.



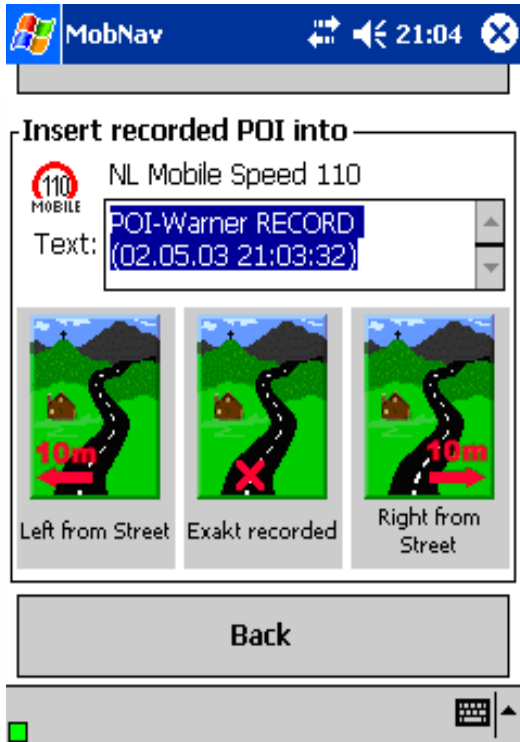
For example select the iTask hardware key.

When you driving on the road and you are facing a interesting POI you can press the hardware key (in this case the iTask button) to start the POI Recorder. A pop-up screen like below will appear.



Select the correct group to add the POI to or choose for delete nearest POI if the POI is not correct. With the previous- and next page you can browse to the different pages which contain the different overlay groups.

After pressing a overlay group to add the poi the next screen will pop-up how to record the POI



You could change this description and choose the location. In the next sync the POI will be added to our database if the point is correct and not already there.

Feedback

If you find any failures in this document or you have suggestions to improve it please send feedback to support@poihandler.com. Please mention the manual name and version number.