

Destinator POI Installation Guide

Author : POIHandler.com
Version : 1.0
Date : 30 January 2005

This manual was produced by POIHandler.com. Information in this document is subject to change without notice. Companies, names, and data used in examples herein are fictitious unless otherwise noted. No part of this document may be reproduced or transmitted in any form or by any means, electronic or mechanical, for any purpose, without the express written permission of POIHandler.com.

Contents

Introduction.....	3
Versions.....	3
Requirements	3
Download	4
Installation	5
Feedback.....	7



Introduction

This manual explains how to install external Point of Interest from POIHandler.com to Destinator. Destinator 3.0.75 and Destinator 3.1 Pro have a build in warning detections system that can be used for speed cams.

Versions

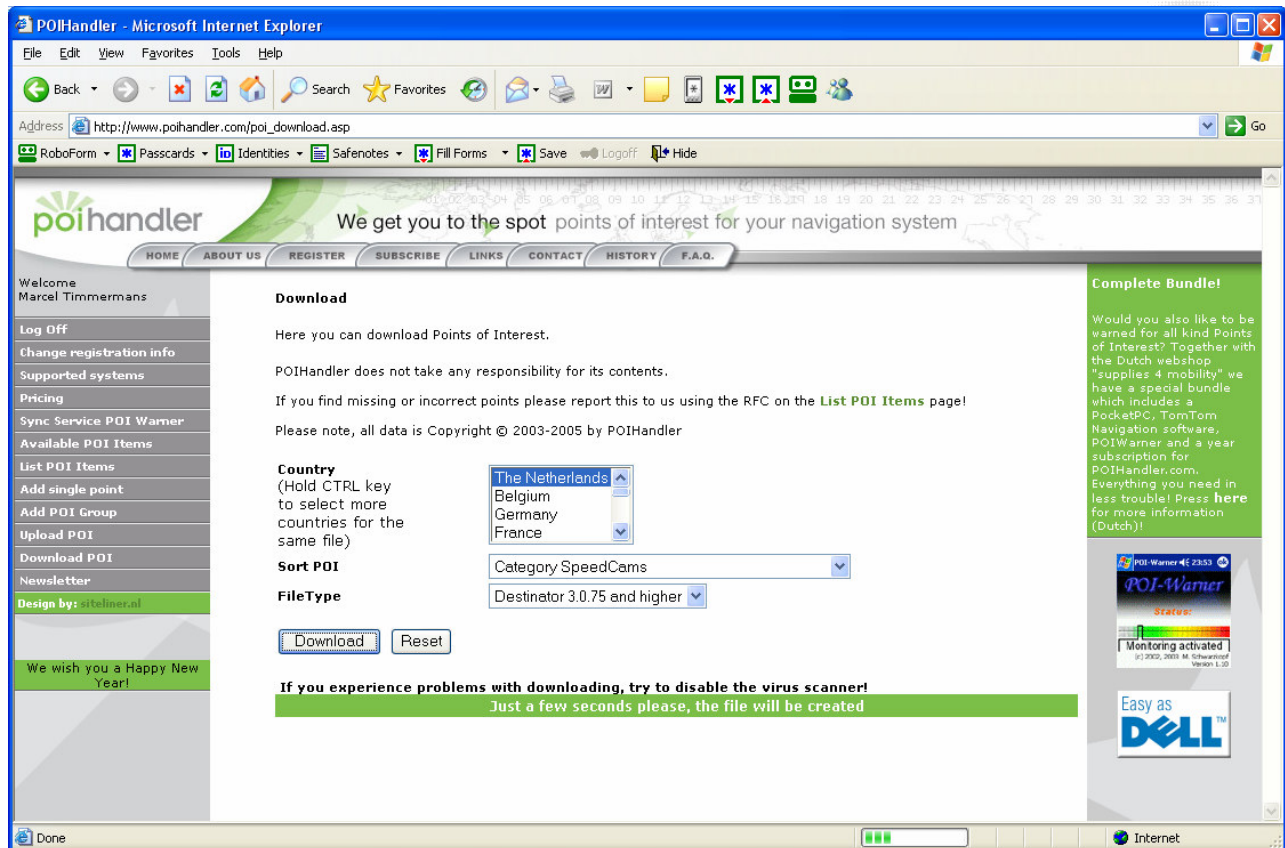
Version	Date	Author
1.0	30-01-2005	Marcel Timmermans, POIHandler.com

Requirements

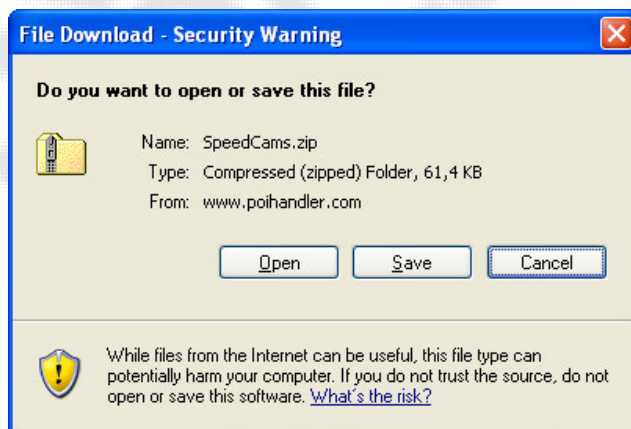
You need a computer that is connected to the internet. In addition to this you need to have a PDA with Destinator version 3.0.75 or Destinator 3.1 PRO connected using Microsoft activesync to your computer.

Download

The first step is go to poihandler.com and login to the website. Select from the left menu "Download POI". This will give you the following screen:



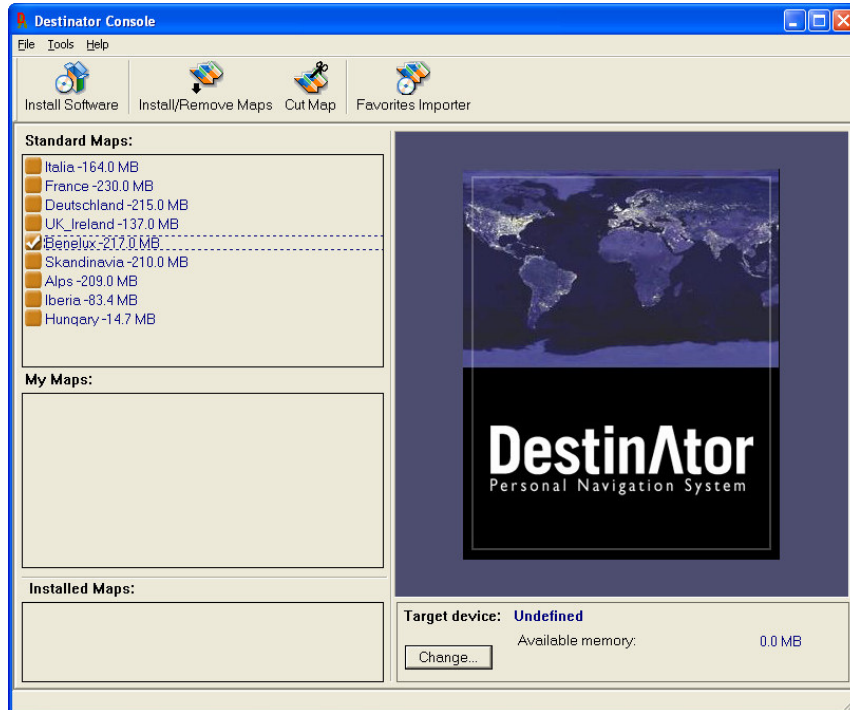
Select the country and for the sort POI for example Speedcams. The filetype must be Destinator 3.0.75 or higher. Press "Download" to Download the zip file. Save the file on your computer by selecting "save" when prompted.



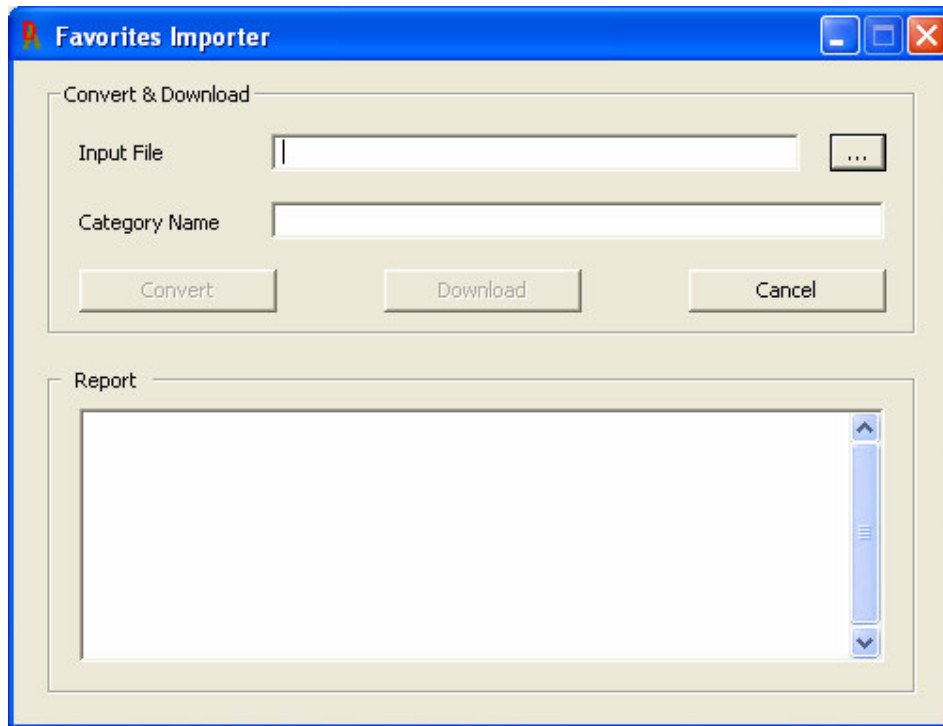
Save the file in a place where you can easily find it again. Unzip the contents.

Installation

The files that are downloaded and extract are "Auto Alert 1.csv" and "Auto Alert 2.csv". The 2 files need to be imported using the Destinator Console. First select in the console a standard map. for example "Benelux".

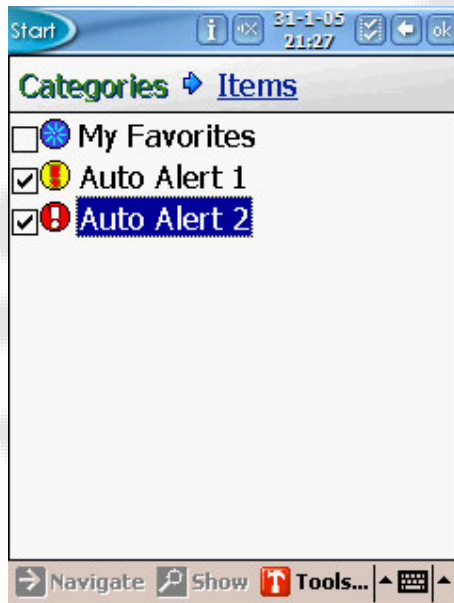


After this the Favorites Importer icon will be visible. Select this icon. The following screen will be available.



Select the Auto Alert 1.csv file as Input file using the "..." button and press convert. The same thing you will also do with Auto Alert 2.csv file. Next presses download to copy the files into your PDA.

On your PDA go to Destinate/Favorites and select Auto Alert 1 and 2



Go to Tools/Edit to edit the distance before you get an alert.

Start 31-1-05 21:30

Edit Category Properties

Name

First Alert

Second Alert

123 1 2 3 4 5 6 7 8 9 0 - = <

Tab q w e r t y u i o p []

CAP a s d f g h j k l ; ' "

Shift z x c v b n m , . / <

Ctl á ü ` \ | } ~ < >

Press save to keep the settings.

You are now all set to go! On the map of Destinator you will find a yellow icon with a red exclamation mark for Speccams (Auto Alert 1) and a red icon with a white exclamation mark for Relight Cams (Auto Alert 2).

Note: A large file slow down the startup process of Destinator. Also a change of map needs more time. (Even the MRE Card can crash). The best way to handle this is to deselect the Checkmarks before Auto Alert 1 and 2. You will NOT see the icons on the map anymore but you will still hear the voice and a large text in the screen. Often the icons are that small that they are very difficult to see anyway.

Feedback

If you find any failures in this document or you have suggestions to improve it please send feedback to support@poihandler.com. Please mention the manual name and version number.