

TomTom GO POI Installation Guide

Author : POIHandler.com
Version : 1.0
Date : 10 March 2005

This manual was produced by POIHandler.com. Information in this document is subject to change without notice. Companies, names, and data used in examples herein are fictitious unless otherwise noted. No part of this document may be reproduced or transmitted in any form or by any means, electronic or mechanical, for any purpose, without the express written permission of POIHandler.com.

Contents

Introduction.....	3
Versions.....	3
Requirements	3
Download	4
Installation	5
POI Warning	8
Navigate to POI.....	12
Feedback.....	14



Introduction

This manual explains how to install external Point of Interest from POIHandler.com to TomTom GO.

Versions

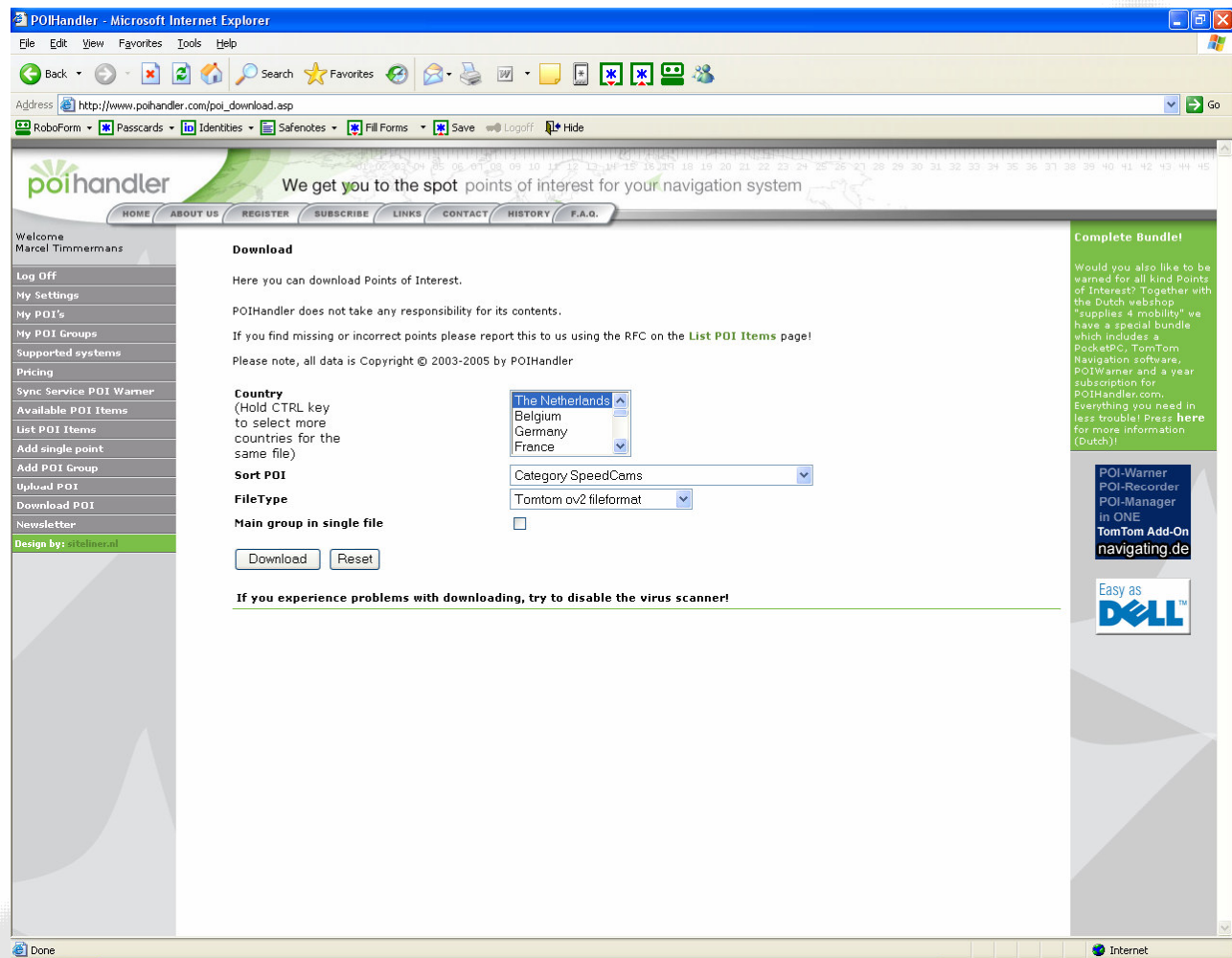
Version	Date	Author
1.0	10-03-2005	Marcel Timmermans, POIHandler.com

Requirements

You need a computer that is connected to the internet. In addition to this you need to have you TomTom GO (version 4.40 and above) connected to your computer.

Download

The first step is go to poihandler.com and login to the website. Select from the left menu "Download POI". This will give you the following screen:



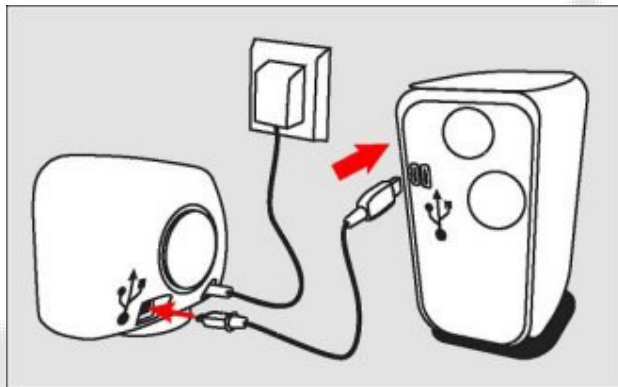
Select the country and for the sort POI for example Speedcams. The filetype must be TomTom ov2 format. Press "Download" to Download the zip file. Save the file on your computer by selecting "save" when prompted.



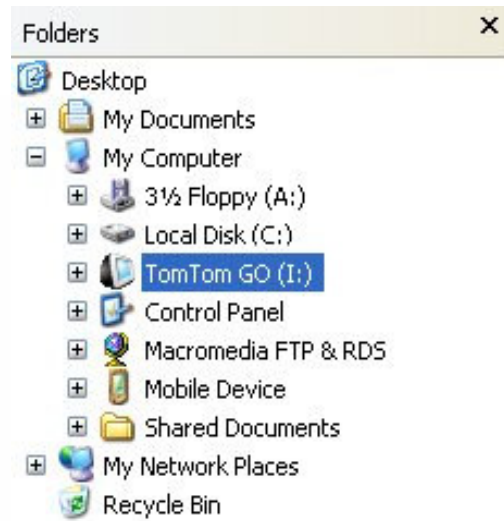
Save the file in a place where you can easily find it again. Unzip the contents.

Installation

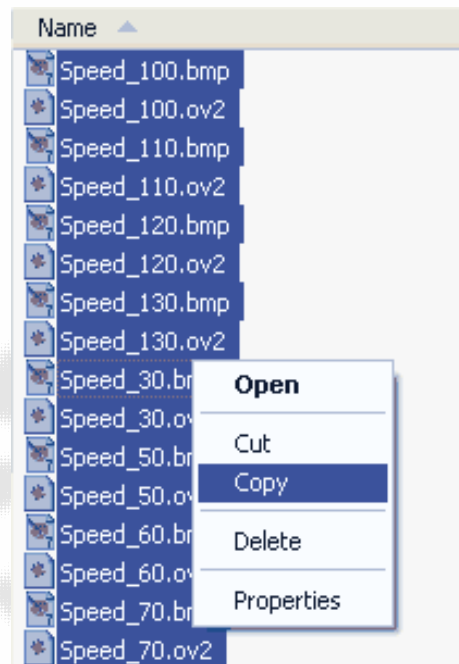
Connect your TomTom GO to your PC using the USB data cable. The USB cable is supplied with your TomTom GO product. Ensure that TomTom GO is powered using the AC adapter.



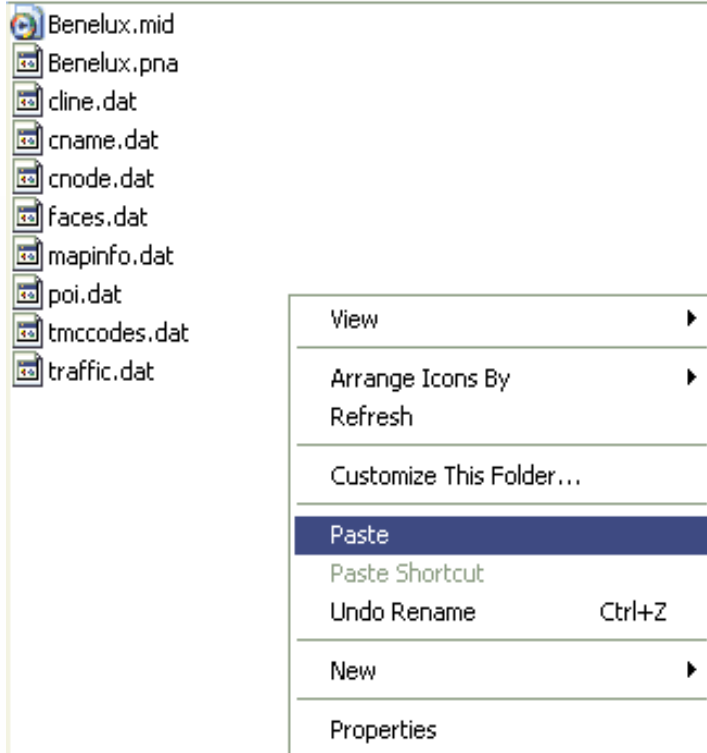
You will find your TomTom GO connection in internet explorer as a removable drive.



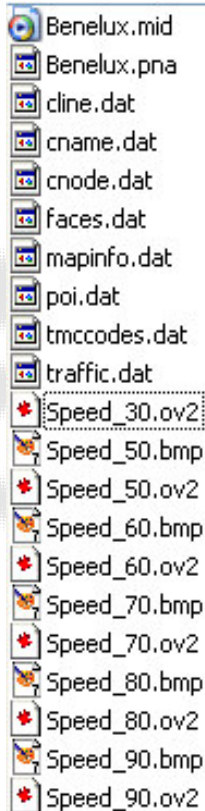
Go to the directory where you stored the extracted zip content. Select all the files using CTRL-A and copy them.



After this go to the country map folder on your TomTom GO drive and paste them. For example Benelux-Map folder.



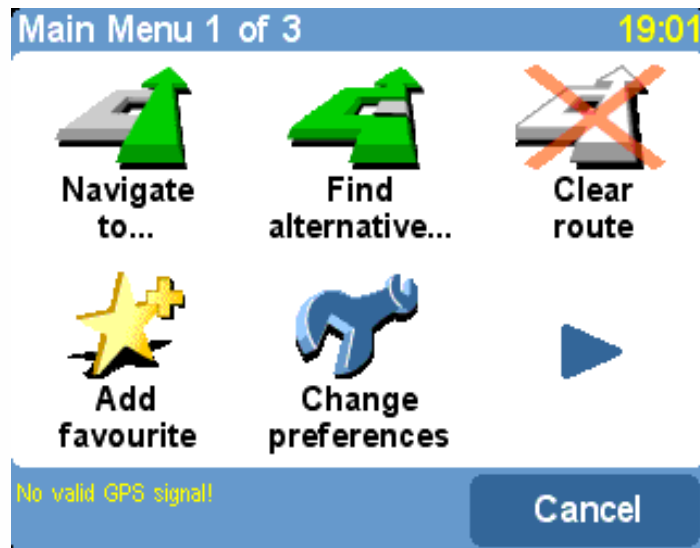
After paste the contents you directory looks something like this:



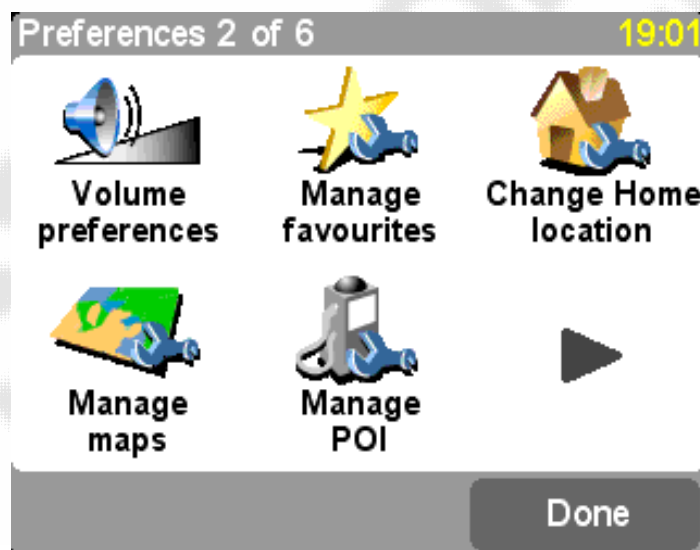
To enable POI's in your TomTom GO you need to select them in your POI categories. They now are displayed on your GO screen in both 3D maps and 2D maps.

POI Warning

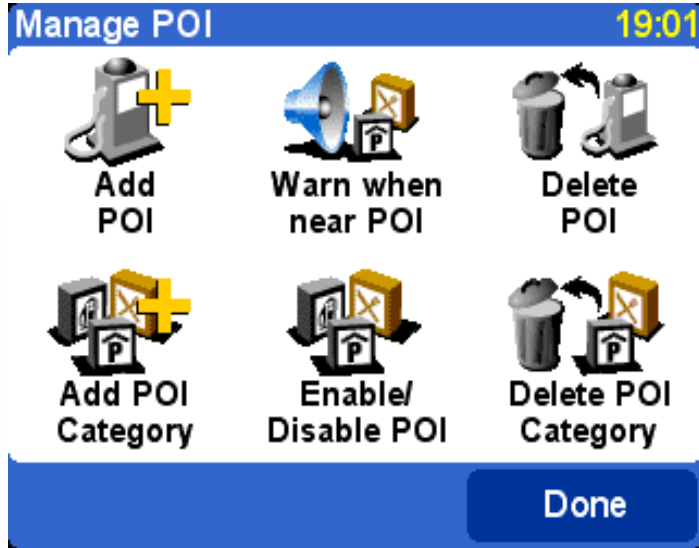
To enable the POI Warning system in TomTom GO, select the screen.



Press the icon "Change Preferences"



Press the Icon "Manage POI"



Press the icon "Warn when near POI"



Select a POI Category


Warn when closer than: 19:02

250 metres

1	2	3	4	5
6	7	8	9	0
◀	Cancel	Done		

Fill in the distance and press Done.

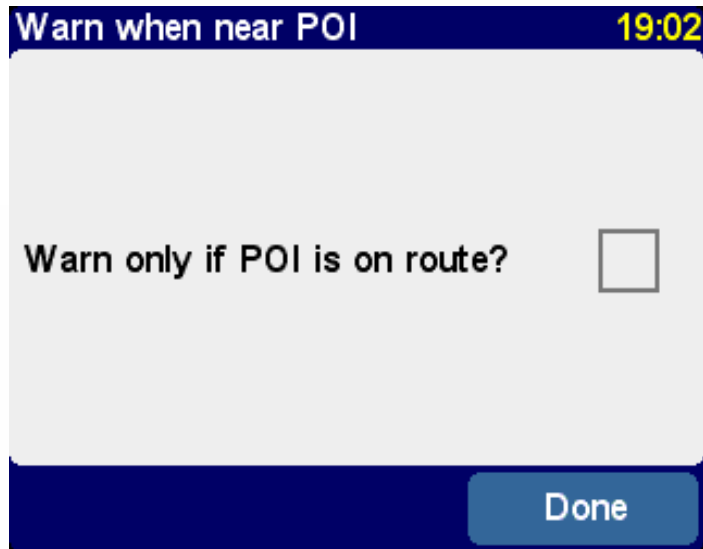
Select a warning sound 19:02

◀  ▶

Boing

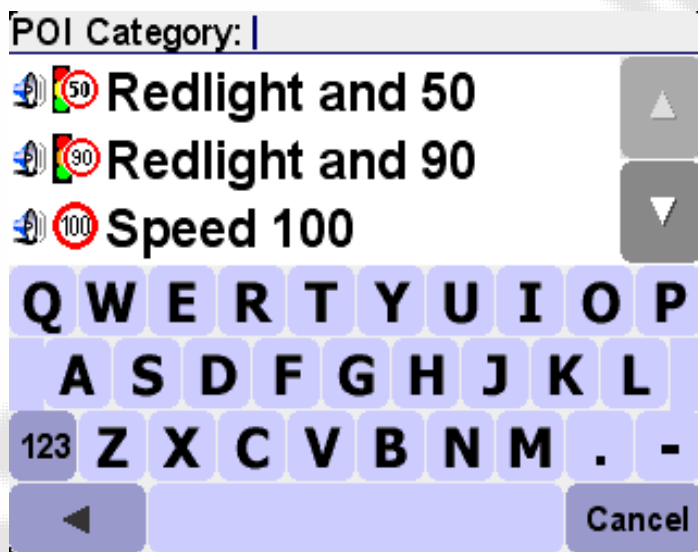
Test Select

Select a sound you would like to here.



Select if you would like to have a warning only when your POI is on the route. When deselected you will be warned when a POI is in the neighborhood.

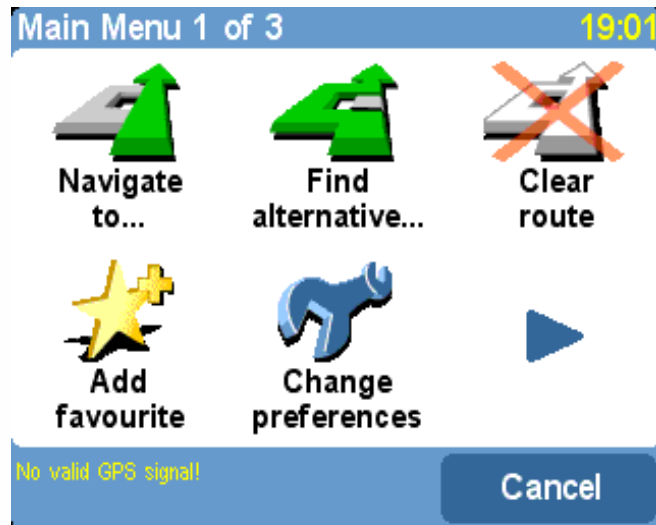
Now you are done and can repeat the steps for other POI Categories.



This screen will let you show on which poi categories you will be warned for.

Navigate to POI

When you would like to navigate to a certain poi press on Navigate to..



This will show you the following screen:



Choose "Point of interest"

Navigate to... 22:57



Petrol
Station



Restaurant



Hotel/
Motel



Parking
Garage



Open
Parking



Relative to:
Johan Buziastraat

Back

Select the arrow for you own POI's

POI Category: |



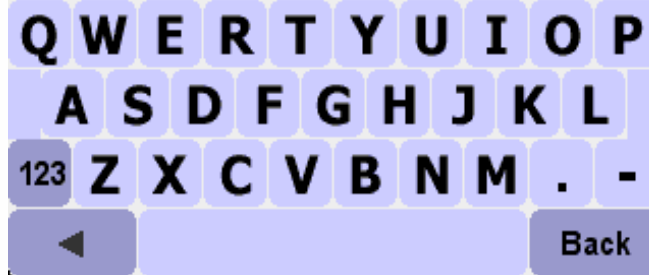
Shopping Centre



Speed 100



Speed 110



Choose one poi category



The screenshot shows a navigation app interface. At the top, there is a blue header with the text "Navigate to..." on the left and "22:57" on the right. Below the header is a list of destinations, each with a distance and a name in brackets followed by a road number or name. The destinations are: 83.9 km [Amsterdam] A10, 85.3 km [Amsterdam] Ho..., 85.3 km [Amsterdam] Ho..., 87.2 km [Dordrecht] E19, 88.1 km [Badhoevedorp]..., and 91.6 km [Hazerswoude D...]. To the right of the list is a vertical scrollbar. At the bottom of the screen, there is a blue bar with a keyboard icon on the left, a "Route" button in the center, and a "Back" button on the right.

Distance	Destination
83.9 km	[Amsterdam] A10
85.3 km	[Amsterdam] Ho...
85.3 km	[Amsterdam] Ho...
87.2 km	[Dordrecht] E19
88.1 km	[Badhoevedorp]...
91.6 km	[Hazerswoude D...

Select the destination.

Feedback

If you find any failures in this document or you have suggestions to improve it please send feedback to support@poihandler.com. Please mention the manual name and version number.