

Navman POI Installation Guide

Author : POIHandler.com
Version : 1.0
Date : 08 February 2005

This manual was produced by POIHandler.com. Information in this document is subject to change without notice. Companies, names, and data used in examples herein are fictitious unless otherwise noted. No part of this document may be reproduced or transmitted in any form or by any means, electronic or mechanical, for any purpose, without the express written permission of POIHandler.com.

Contents

| | |
|----------------------|---|
| Introduction..... | 3 |
| Versions | 3 |
| Requirements | 3 |
| Download | 4 |
| Installation | 5 |
| Navigate to POI..... | 7 |
| Settings | 8 |
| Feedback..... | 9 |



Introduction

This manual explains how to install external Point of Interest from POIHandler.com to Navman SmartST™ V3. Navman SmartST™ V3 has a build in warning detections system that can be used for speed cams.

Versions

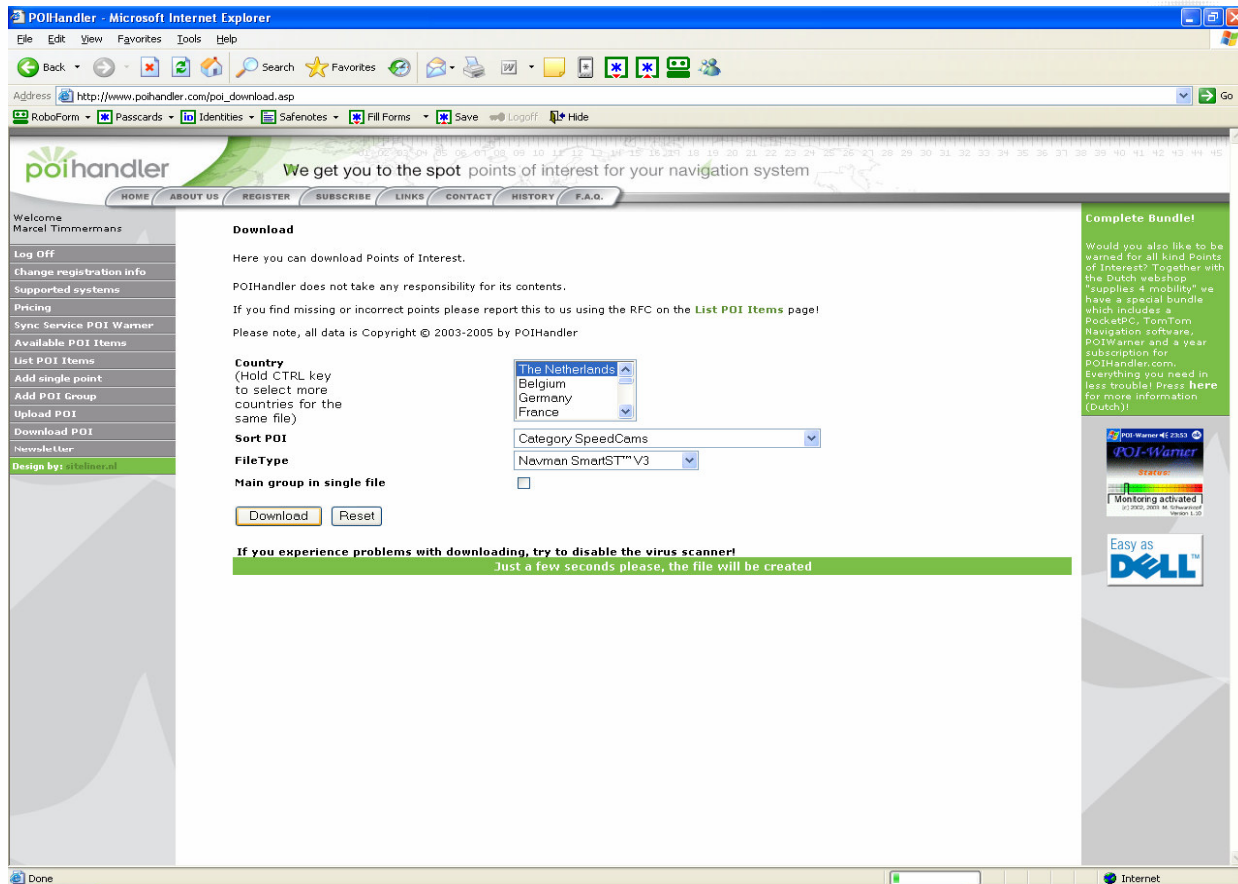
| Version | Date | Author |
|---------|------------|-----------------------------------|
| 1.0 | 08-02-2005 | Marcel Timmermans, POIHandler.com |
| | | |
| | | |

Requirements

You need a computer that is connected to the internet. In addition to this you need to have a PDA with Navman SmartST™ V3 or higher connected using Microsoft activesync to your computer.

Download

The first step is go to poihandler.com and login to the website. Select from the left menu "Download POI". This will give you the following screen:



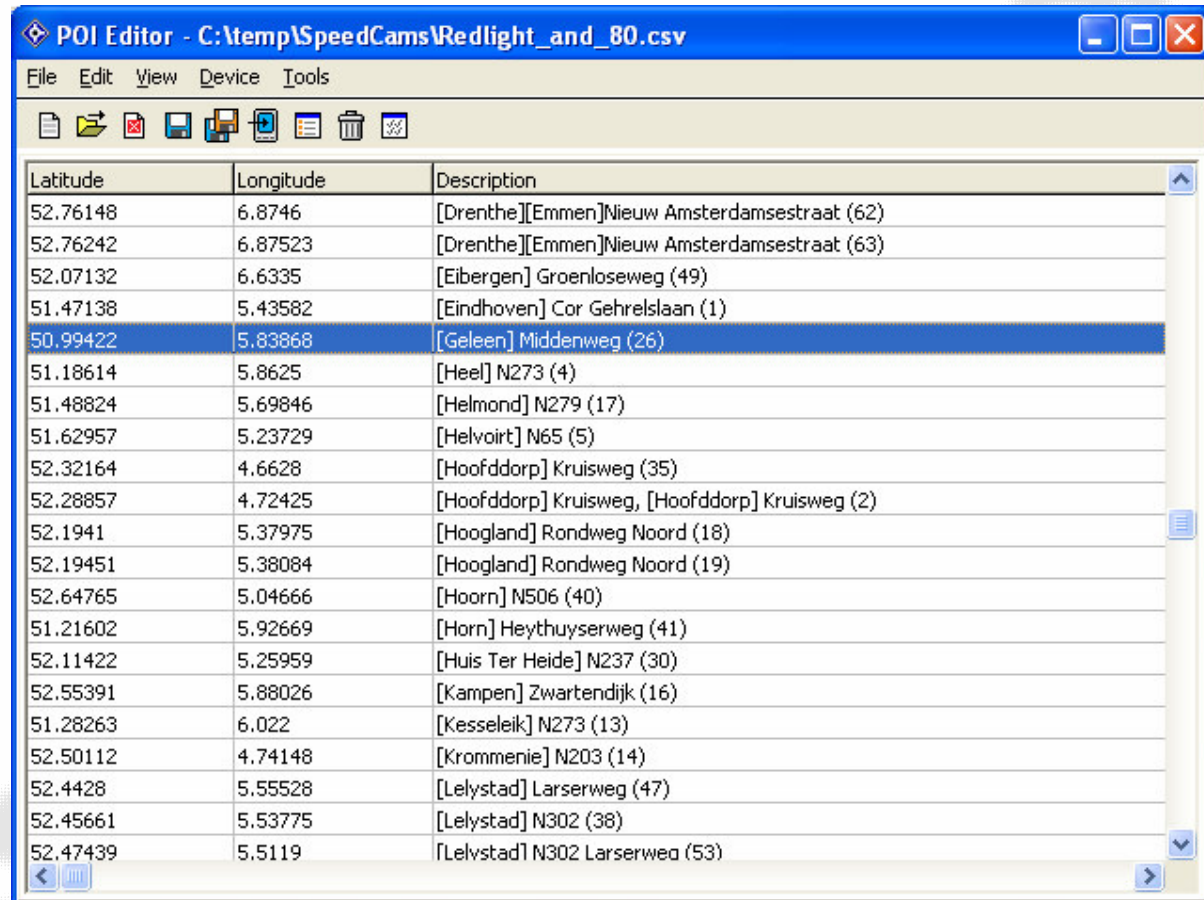
Select the country and for the sort POI for example Speedcams. The filetype must be Navman SmartST™ V3. Press "Download" to Download the zip file. Save the file on your computer by selecting "save" when prompted.



Save the file in a place where you can easily find it again. Unzip the contents.


Installation

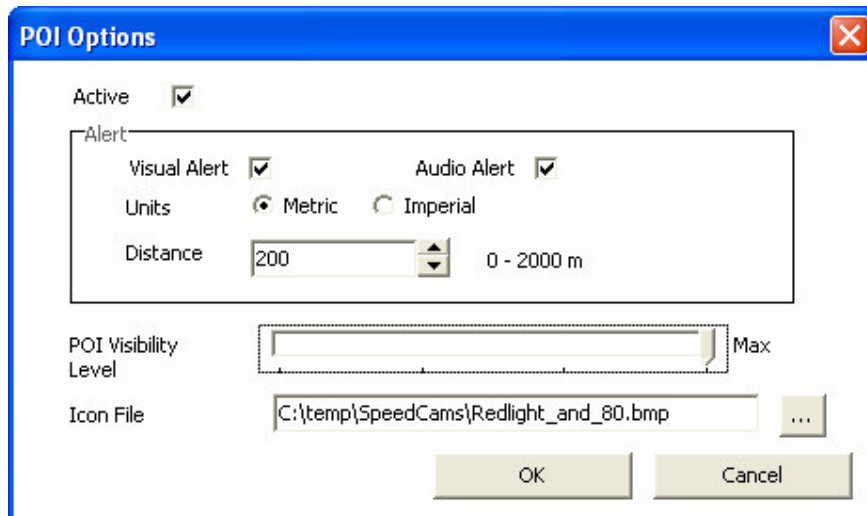
The files that are downloaded needs to be imported using the POI Program which can start from the SmartST Desktop.



The screenshot shows the POI Editor application window with the following data:

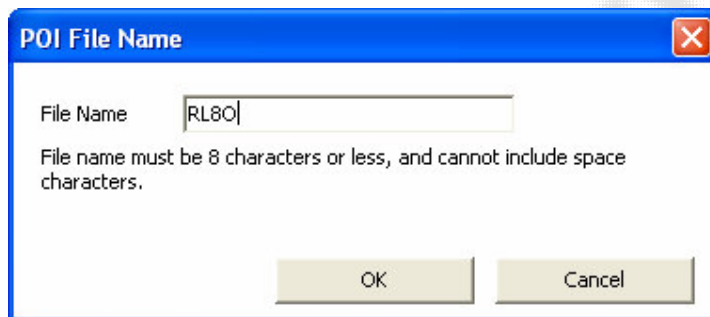
| Latitude | Longitude | Description |
|----------|-----------|--|
| 52.76148 | 6.8746 | [Drenthe][Emmen]Nieuw Amsterdamsestraat (62) |
| 52.76242 | 6.87523 | [Drenthe][Emmen]Nieuw Amsterdamsestraat (63) |
| 52.07132 | 6.6335 | [Eibergen] Groenloseweg (49) |
| 51.47138 | 5.43582 | [Eindhoven] Cor Gehrelsiaan (1) |
| 50.99422 | 5.83868 | [Geleen] Middenweg (26) |
| 51.18614 | 5.8625 | [Heel] N273 (4) |
| 51.48824 | 5.69846 | [Helmond] N279 (17) |
| 51.62957 | 5.23729 | [Helvoirt] N65 (5) |
| 52.32164 | 4.6628 | [Hoofddorp] Kruisweg (35) |
| 52.28857 | 4.72425 | [Hoofddorp] Kruisweg, [Hoofddorp] Kruisweg (2) |
| 52.1941 | 5.37975 | [Hoogland] Rondweg Noord (18) |
| 52.19451 | 5.38084 | [Hoogland] Rondweg Noord (19) |
| 52.64765 | 5.04666 | [Hoorn] N506 (40) |
| 51.21602 | 5.92669 | [Horn] Heythuyserweg (41) |
| 52.11422 | 5.25959 | [Huis Ter Heide] N237 (30) |
| 52.55391 | 5.88026 | [Kampen] Zwartendijk (16) |
| 51.28263 | 6.022 | [Kesseleik] N273 (13) |
| 52.50112 | 4.74148 | [Krommenie] N203 (14) |
| 52.4428 | 5.55528 | [Lelystad] Larserweg (47) |
| 52.45661 | 5.53775 | [Lelystad] N302 (38) |
| 52.47439 | 5.5119 | [Lelystad] N302 Larserweg (53) |

Select the  icon to store the file to your PDA. The following screen becomes available.



Select the correct Icon file so that you will see a nice picture on the navigating map. You can also select other items you like Visual Alert.

After pressing ok you will be asked for a POI File Name (see below)

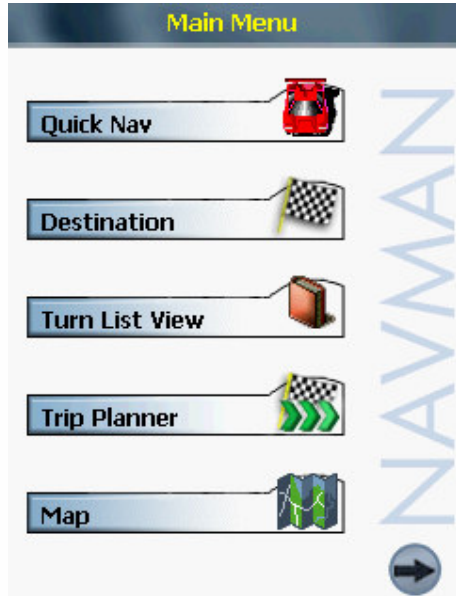


Fill in a name and press ok.

Repeat the above steps for all the POI files you would like to have.

Navigate to POI

When you would like to navigate to a certain poi press on destination



This will show you the following screen:

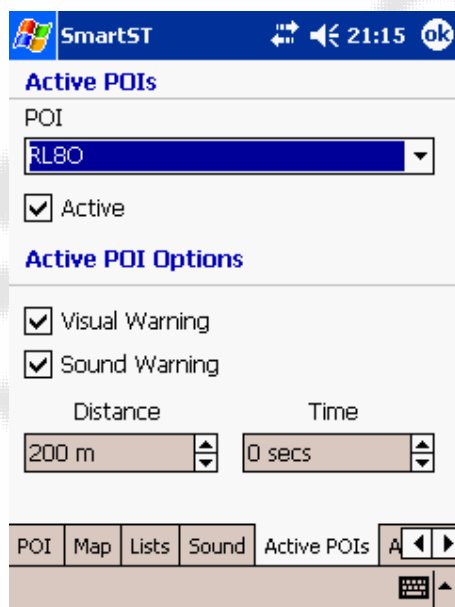


Select now Points of Interest



In this screen select Category MY POI and the type of poi. After this press the right arrow.

Settings



Here you can redefine your settings regarding the poi-warner.

Feedback

If you find any failures in this document or you have suggestions to improve it please send feedback to support@poihandler.com. Please mention the manual name and version number.

